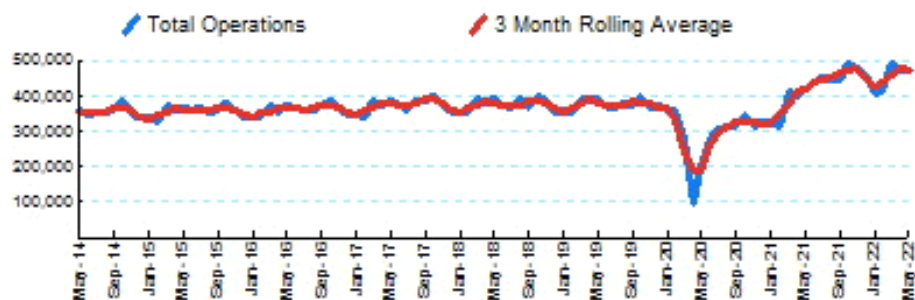


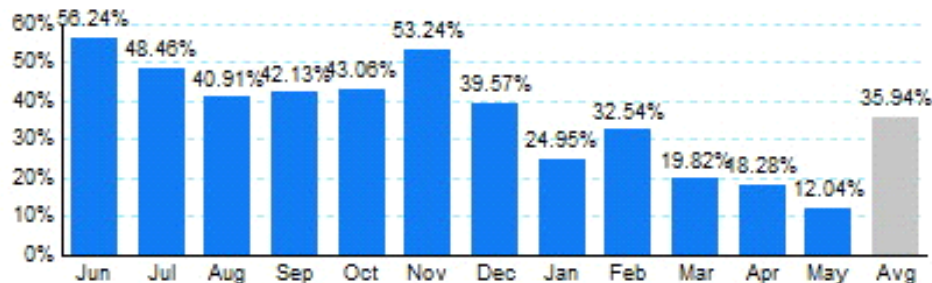


1.Total Business Jet Operations



Source: ETMSC
Note: Operations refer to arrivals and departures.

2.Year Over Year Change in Business Jet Operations Jun 21 - May 22 vs. Jun 20 - May 21



Source: ETMSC

3.Monthly Trends

Month	Total			Domestic			International		
	2021-2022	2020-2021	Change	2021-2022	2020-2021	Change	2021-2022	2020-2021	Change
Jun	438,584	280,714	56.24%	384,866	252,836	52.22%	53,718	27,878	92.69%
Jul	456,088	307,218	48.46%	396,246	267,628	48.06%	59,842	39,590	51.15%
Aug	448,138	318,026	40.91%	391,248	278,522	40.47%	56,890	39,504	44.01%
Sep	449,154	316,022	42.13%	394,386	280,788	40.46%	54,768	35,234	55.44%
Oct	496,238	346,864	43.06%	434,386	308,138	40.97%	61,852	38,726	59.72%
Nov	477,342	311,496	53.24%	410,554	269,620	52.27%	66,788	41,876	59.49%
Dec	459,058	328,914	39.57%	390,574	278,054	40.47%	68,484	50,860	34.65%
Jan	407,152	325,856	24.95%	346,468	277,142	25.01%	60,684	48,714	24.57%
Feb	415,990	313,862	32.54%	353,248	273,442	29.19%	62,742	40,420	55.23%
Mar	492,664	411,182	19.82%	415,274	354,818	17.04%	77,390	56,364	37.30%
Apr	476,016	402,464	18.28%	402,982	345,988	16.47%	73,034	56,476	29.32%
May	472,310	421,562	12.04%	403,160	367,420	9.73%	69,150	54,142	27.72%
Total	5,488,734	4,084,180	34.39%	4,723,392	3,554,396	32.89%	765,342	529,784	44.46%

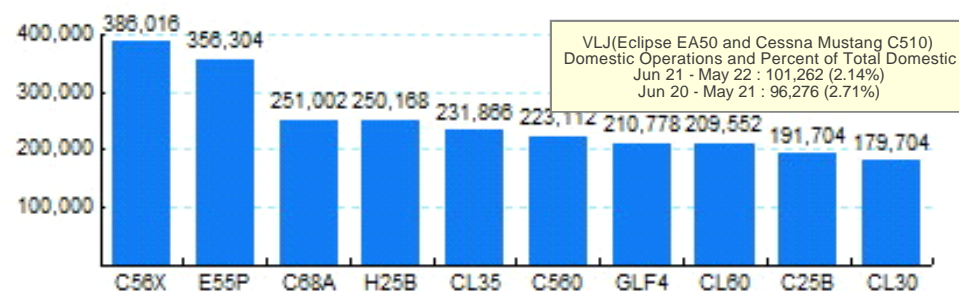
Source: ETMSC
Note: International flights include US to Foreign, Foreign to US and all foreign operations.

4.Overall Trends (Calendar Year)

Year	Total		Domestic		International	
	Operations	Change	Operations	Change	Operations	Change
2012	3,982,236		3,315,438		666,798	
2013	4,072,848	2.28%	3,394,942	2.40%	677,906	1.67%
2014	4,235,910	4.00%	3,527,038	3.89%	708,872	4.57%
2015	4,291,174	1.30%	3,605,060	2.21%	686,114	-3.21%
2016	4,349,740	1.36%	3,667,338	1.73%	682,402	-0.54%
2017	4,483,614	3.08%	3,793,700	3.45%	689,914	1.10%
2018	4,520,968	0.83%	3,824,528	0.81%	696,440	0.95%
2019	4,533,920	0.29%	3,836,578	0.32%	697,342	0.13%
2020	3,501,192	-22.78%	3,033,148	-20.94%	468,044	-32.88%
2021	5,099,528	45.65%	4,421,070	45.76%	678,458	44.96%
2022*	2,264,132		1,921,132		343,000	

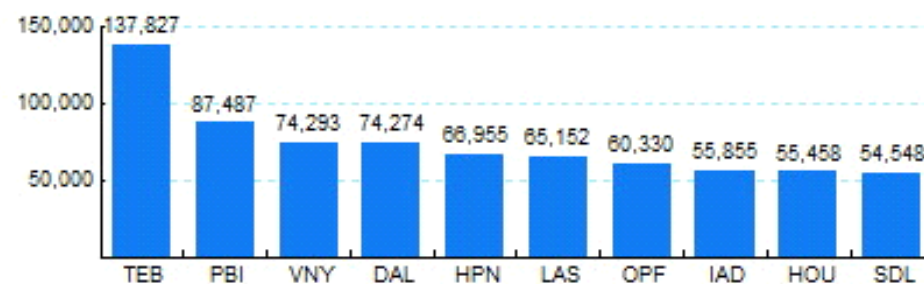
* - Year to date
Source: ETMSC
Note: International flights include US to Foreign, Foreign to US and all foreign operations.

5.Top Ten Aircraft for Domestic Business Jet Operations Jun 21 - May 22



Source: ETMSC

6.Top Ten Airports for Domestic Business Jet Operations Jun 21 - May 22



Source: ETMSC