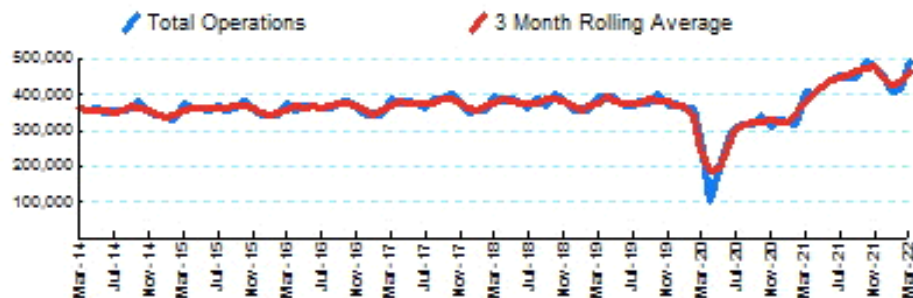


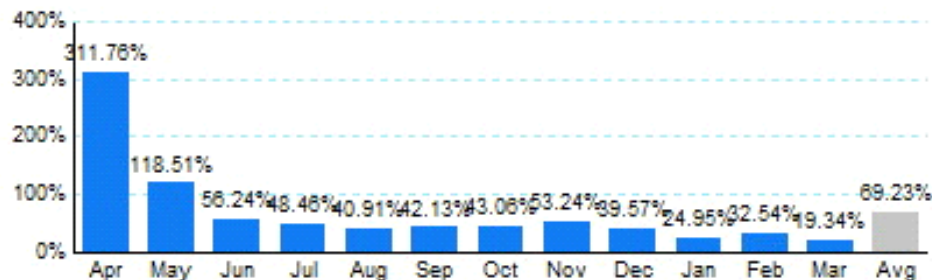


1.Total Business Jet Operations



Source: ETMSC
Note: Operations refer to arrivals and departures.

2.Year Over Year Change in Business Jet Operations Apr 21 - Mar 22 vs. Apr 20 - Mar 21



Source: ETMSC

3.Monthly Trends

Month	Total			Domestic			International		
	2021-2022	2020-2021	Change	2021-2022	2020-2021	Change	2021-2022	2020-2021	Change
Apr	402,464	97,742	311.76%	345,988	85,032	306.89%	56,476	12,710	344.34%
May	421,562	192,926	118.51%	367,420	175,068	109.87%	54,142	17,858	203.18%
Jun	438,584	280,714	56.24%	384,866	252,836	52.22%	53,718	27,878	92.69%
Jul	456,088	307,218	48.46%	396,246	267,628	48.06%	59,842	39,590	51.15%
Aug	448,138	318,026	40.91%	391,248	278,522	40.47%	56,890	39,504	44.01%
Sep	449,154	316,022	42.13%	394,386	280,788	40.46%	54,768	35,234	55.44%
Oct	496,238	346,864	43.06%	434,386	308,138	40.97%	61,852	38,726	59.72%
Nov	477,342	311,496	53.24%	410,554	269,620	52.27%	66,788	41,876	59.49%
Dec	459,058	328,914	39.57%	390,574	278,054	40.47%	68,484	50,860	34.65%
Jan	407,152	325,856	24.95%	346,468	277,142	25.01%	60,684	48,714	24.57%
Feb	415,990	313,862	32.54%	353,248	273,442	29.19%	62,742	40,420	55.23%
Mar	490,720	411,182	19.34%	413,698	354,818	16.59%	77,022	56,364	36.65%
Total	5,362,490	3,550,822	51.02%	4,629,082	3,101,088	49.27%	733,408	449,734	63.08%

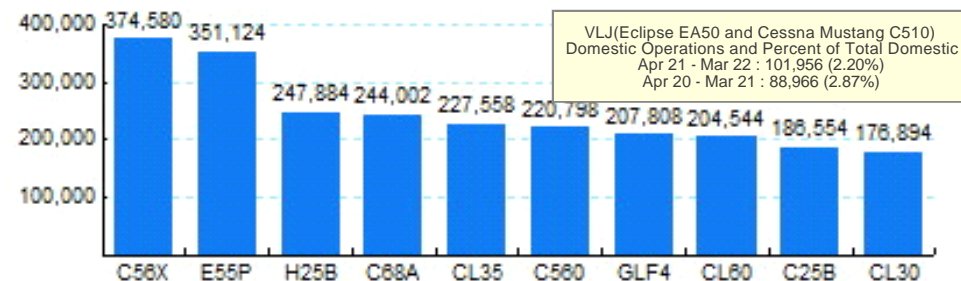
Source: ETMSC
Note: International flights include US to Foreign, Foreign to US and all foreign operations.

4.Overall Trends (Calendar Year)

Year	Total		Domestic		International	
	Operations	Change	Operations	Change	Operations	Change
2012	3,982,236		3,315,438		666,798	
2013	4,072,848	2.28%	3,394,942	2.40%	677,906	1.67%
2014	4,235,910	4.00%	3,527,038	3.89%	708,872	4.57%
2015	4,291,174	1.30%	3,605,060	2.21%	686,114	-3.21%
2016	4,349,740	1.36%	3,667,338	1.73%	682,402	-0.54%
2017	4,483,614	3.08%	3,793,700	3.45%	689,914	1.10%
2018	4,520,968	0.83%	3,824,528	0.81%	696,440	0.95%
2019	4,533,920	0.29%	3,836,578	0.32%	697,342	0.13%
2020	3,501,192	-22.78%	3,033,148	-20.94%	468,044	-32.88%
2021	5,099,528	45.65%	4,421,070	45.76%	678,458	44.96%
2022*	1,313,862		1,113,414		200,448	

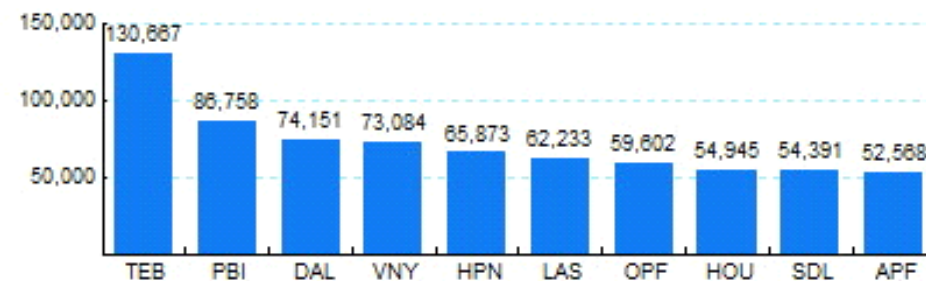
* - Year to date
Source: ETMSC
Note: International flights include US to Foreign, Foreign to US and all foreign operations.

5.Top Ten Aircraft for Domestic Business Jet Operations Apr 21 - Mar 22



Source: ETMSC

6.Top Ten Airports for Domestic Business Jet Operations Apr 21 - Mar 22



Source: ETMSC