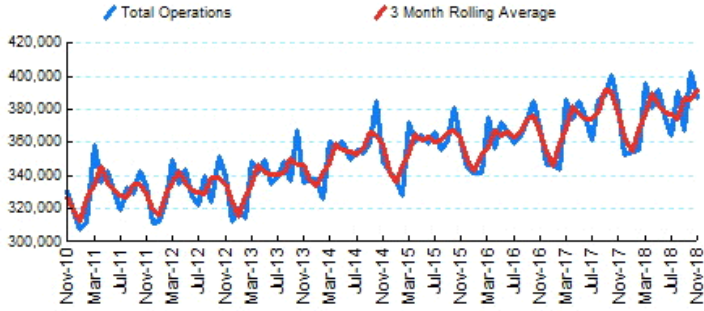




1.Total Business Jet Operations



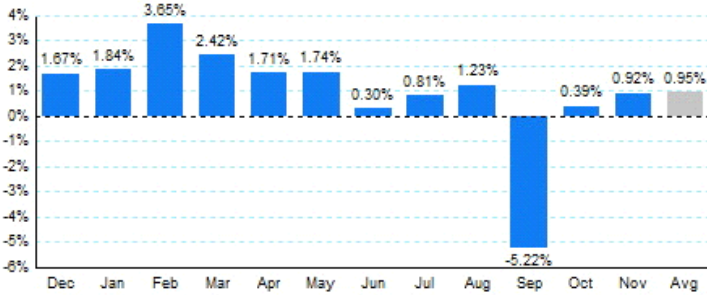
Source: ETMSC
 Note: Operations refer to arrivals and departures.

4.Overall Trends (Calendar Year)

Year	Total		Domestic		International	
	Operations	Change	Operations	Change	Operations	Change
2005	4,727,826		4,191,692		536,134	
2006	4,745,746	0.38%	4,166,506	-0.60%	579,240	8.04%
2007	4,824,960	1.67%	4,180,510	0.34%	644,450	11.26%
2008	4,291,104	-11.06%	3,681,606	-11.93%	609,498	-5.42%
2009	3,449,204	-19.62%	2,929,476	-20.43%	519,728	-14.73%
2010	3,842,314	11.40%	3,212,132	9.65%	630,182	21.25%
2011	3,955,400	2.94%	3,323,596	3.47%	631,804	0.26%
2012	3,982,236	0.68%	3,315,438	-0.25%	666,798	5.54%
2013	4,072,848	2.28%	3,394,942	2.40%	677,906	1.67%
2014	4,235,910	4.00%	3,527,038	3.89%	708,872	4.57%
2015	4,291,174	1.30%	3,605,060	2.21%	686,114	-3.21%
2016	4,349,740	1.36%	3,667,338	1.73%	682,402	-0.54%
2017	4,483,614	3.08%	3,793,700	3.45%	689,914	1.10%
2018*	4,166,516		3,527,416		639,100	

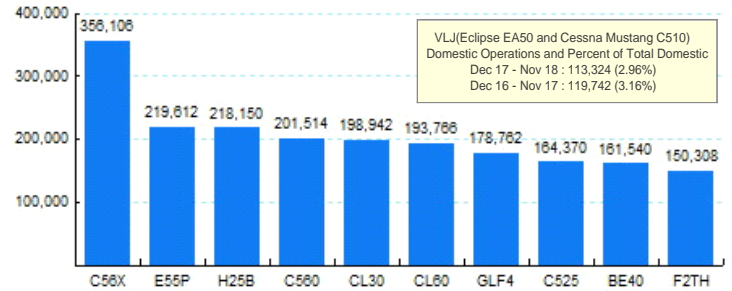
* - Year to date
 Source: ETMSC
 Note: International flights include US to Foreign, Foreign to US and all foreign operations.

2.Year Over Year Change in Business Jet Operations Dec 17 - Nov 18 vs. Dec 16 - Nov 17



Source: ETMSC

5.Top Ten Aircraft for Domestic Business Jet Operations Dec 17 - Nov 18



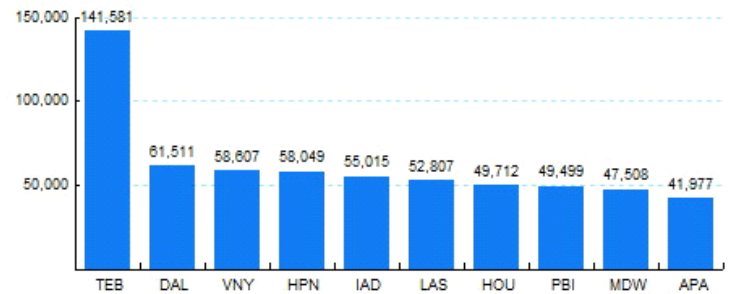
Source: ETMSC

3.Monthly Trends

Month	Total			Domestic			International		
	2017-2018	2016-2017	Change	2017-2018	2016-2017	Change	2017-2018	2016-2017	Change
Dec	352,114	346,330	1.67%	295,048	289,872	1.79%	57,066	56,458	1.08%
Jan	353,994	347,614	1.84%	297,162	291,776	1.85%	56,832	55,838	1.78%
Feb	355,904	343,368	3.65%	300,924	289,696	3.88%	54,980	53,672	2.44%
Mar	395,808	386,464	2.42%	329,128	322,960	1.91%	66,680	63,504	5.00%
Apr	380,586	374,200	1.71%	320,610	313,664	2.21%	59,976	60,536	-0.93%
May	391,594	384,882	1.74%	330,942	324,304	2.05%	60,652	60,578	0.12%
Jun	376,430	375,288	0.30%	316,182	315,106	0.34%	60,248	60,182	0.11%
Jul	364,714	361,778	0.81%	307,720	304,052	1.21%	56,994	57,726	-1.27%
Aug	390,592	385,844	1.23%	335,052	330,508	1.37%	55,540	55,336	0.37%
Sep	367,528	387,788	-5.22%	315,776	335,710	-5.94%	51,752	52,078	-0.63%
Oct	402,306	400,728	0.39%	347,322	345,830	0.43%	54,984	54,898	0.16%
Nov	387,060	383,546	0.92%	326,598	325,046	0.48%	60,462	58,500	3.35%
Total	4,518,630	4,477,830	0.91%	3,822,464	3,788,524	0.90%	696,166	689,306	1.00%

Source: ETMSC
 Note: International flights include US to Foreign, Foreign to US and all foreign operations.

6.Top Ten Airports for Domestic Business Jet Operations Dec 17 - Nov 18



Source: ETMSC

Comments: