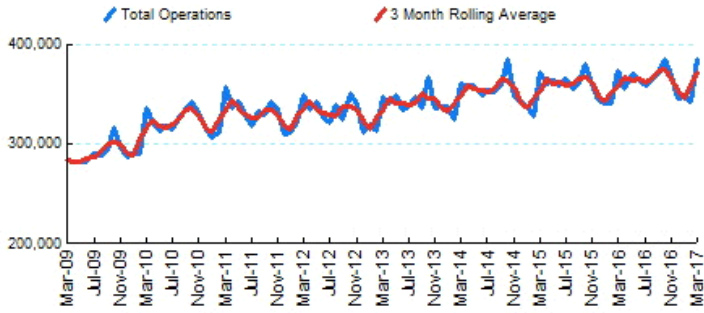




1.Total Business Jet Operations



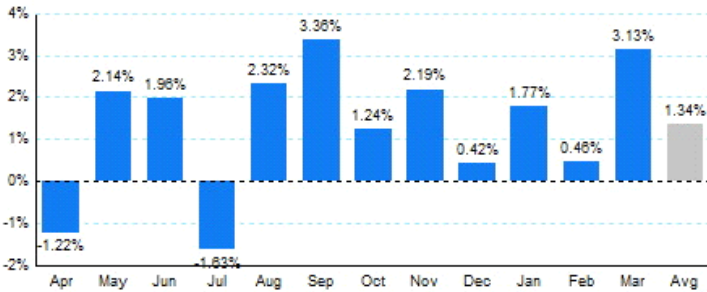
Source: ETMSC
Note: Operations refer to arrivals and departures.

4.Overall Trends (Calendar Year)

Year	Total		Domestic		International	
	Operations	Change	Operations	Change	Operations	Change
2005	4,727,826		4,191,692		536,134	
2006	4,745,746	0.38%	4,166,506	-0.60%	579,240	8.04%
2007	4,824,960	1.67%	4,180,510	0.34%	644,450	11.26%
2008	4,291,104	-11.06%	3,681,606	-11.93%	609,498	-5.42%
2009	3,449,204	-19.62%	2,929,476	-20.43%	519,728	-14.73%
2010	3,842,314	11.40%	3,212,132	9.65%	630,182	21.25%
2011	3,955,400	2.94%	3,323,596	3.47%	631,804	0.26%
2012	3,982,236	0.68%	3,315,438	-0.25%	666,798	5.54%
2013	4,072,848	2.28%	3,394,942	2.40%	677,906	1.67%
2014	4,235,910	4.00%	3,527,038	3.89%	708,872	4.57%
2015	4,291,174	1.30%	3,605,060	2.21%	686,114	-3.21%
2016	4,349,740	1.36%	3,667,338	1.73%	682,402	-0.54%
2017*	1,077,446		904,432		173,014	

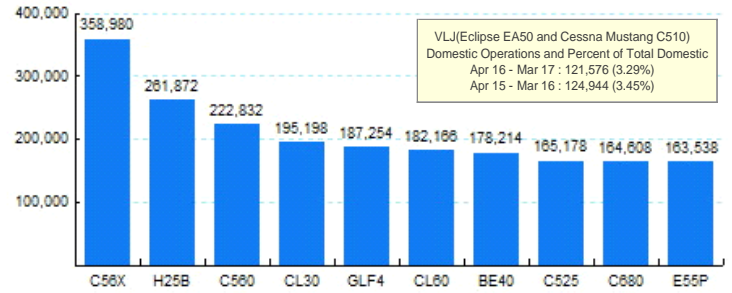
* - Year to date
Source: ETMSC
Note: International flights include US to Foreign, Foreign to US and all foreign operations.

2.Year Over Year Change in Business Jet Operations Apr 16 - Mar 17 vs. Apr 15 - Mar 16



Source: ETMSC

5.Top Ten Aircraft for Domestic Business Jet Operations Apr 16 - Mar 17



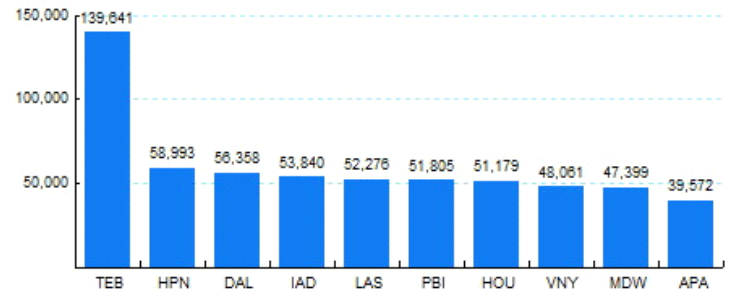
Source: ETMSC

3.Monthly Trends

Month	Total			Domestic			International		
	2016-2017	2015-2016	Change	2016-2017	2015-2016	Change	2016-2017	2015-2016	Change
Apr	356,284	360,696	-1.22%	300,250	304,136	-1.28%	56,034	56,560	-0.93%
May	371,838	364,038	2.14%	313,178	305,564	2.49%	58,660	58,474	0.32%
Jun	366,016	358,974	1.96%	307,204	298,962	2.76%	58,812	60,012	-2.00%
Jul	359,816	365,790	-1.63%	302,164	307,422	-1.71%	57,652	58,368	-1.23%
Aug	363,970	355,704	2.32%	310,300	301,080	3.06%	53,670	54,624	-1.75%
Sep	373,452	361,326	3.36%	319,256	310,442	2.84%	54,196	50,884	6.51%
Oct	385,266	380,562	1.24%	332,252	325,818	1.97%	53,014	54,744	-3.16%
Nov	368,678	360,780	2.19%	312,402	303,574	2.91%	56,276	57,206	-1.63%
Dec	346,330	344,882	0.42%	289,872	286,336	1.23%	56,458	58,546	-3.57%
Jan	347,614	341,562	1.77%	291,776	284,028	2.73%	55,838	57,534	-2.95%
Feb	343,368	341,800	0.46%	289,696	286,034	1.28%	53,672	55,766	-3.75%
Mar	386,464	374,728	3.13%	322,960	310,398	4.05%	63,504	64,330	-1.28%
Total	4,369,096	4,310,842	1.35%	3,691,310	3,623,794	1.86%	677,786	687,048	-1.35%

Source: ETMSC
Note: International flights include US to Foreign, Foreign to US and all foreign operations.

6.Top Ten Airports for Domestic Business Jet Operations Apr 16 - Mar 17



Source: ETMSC

Comments: