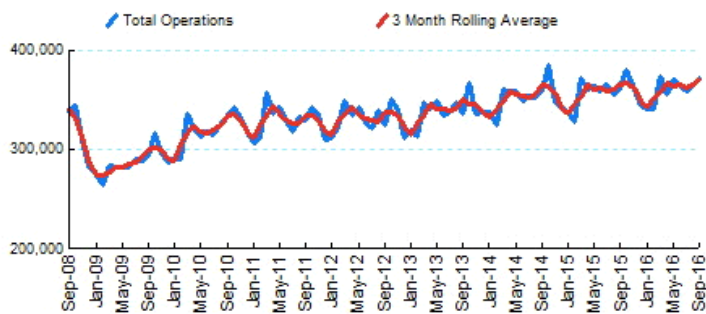




### 1.Total Business Jet Operations



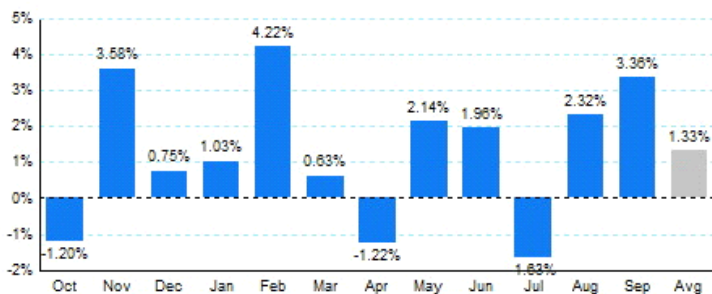
Source: ETMSC  
Note: Operations refer to arrivals and departures.

### 4.Overall Trends (Calendar Year)

Year	Total		Domestic		International	
	Operations	Change	Operations	Change	Operations	Change
2005	4,727,826		4,191,692		536,134	
2006	4,745,746	0.38%	4,166,506	-0.60%	579,240	8.04%
2007	4,824,960	1.67%	4,180,510	0.34%	644,450	11.26%
2008	4,291,104	-11.06%	3,681,606	-11.93%	609,498	-5.42%
2009	3,449,204	-19.62%	2,929,476	-20.43%	519,728	-14.73%
2010	3,842,314	11.40%	3,212,132	9.65%	630,182	21.25%
2011	3,955,400	2.94%	3,323,596	3.47%	631,804	0.26%
2012	3,982,236	0.68%	3,315,438	-0.25%	666,798	5.54%
2013	4,072,848	2.28%	3,394,942	2.40%	677,906	1.67%
2014	4,235,910	4.00%	3,527,038	3.89%	708,872	4.57%
2015	4,291,174	1.30%	3,605,060	2.21%	686,114	-3.21%
2016*	3,249,466		2,732,812		516,654	

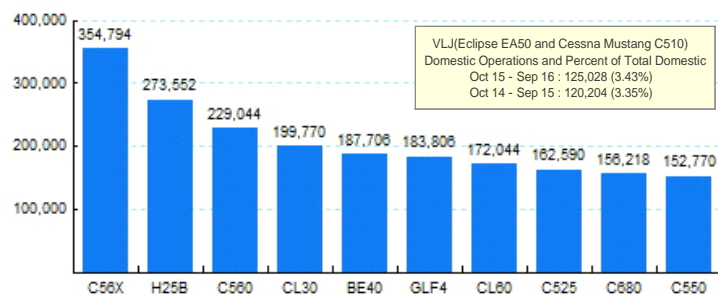
\* - Year to date  
Source: ETMSC  
Note: International flights include US to Foreign, Foreign to US and all foreign operations.

### 2.Year Over Year Change in Business Jet Operations Oct 15 - Sep 16 vs. Oct 14 - Sep 15



Source: ETMSC

### 5.Top Ten Aircraft for Domestic Business Jet Operations Oct 15 - Sep 16



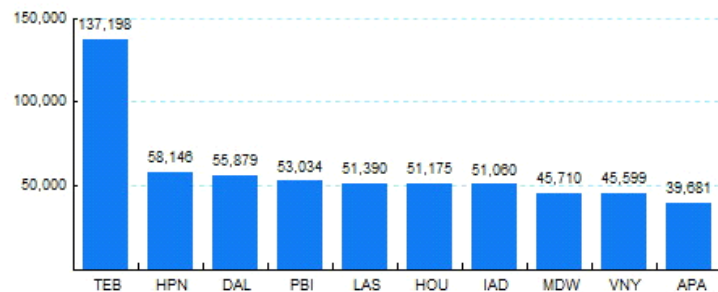
Source: ETMSC

### 3.Monthly Trends

Month	Total			Domestic			International		
	2015-2016	2014-2015	Change	2015-2016	2014-2015	Change	2015-2016	2014-2015	Change
Oct	380,562	385,170	-1.20%	325,818	326,954	-0.35%	54,744	58,216	-5.96%
Nov	360,780	348,294	3.58%	303,574	290,894	4.36%	57,206	57,400	-0.34%
Dec	344,882	342,322	0.75%	286,336	282,826	1.24%	58,546	59,496	-1.60%
Jan	341,562	338,090	1.03%	284,028	280,366	1.31%	57,534	57,724	-0.33%
Feb	341,800	327,960	4.22%	286,034	273,530	4.57%	55,766	54,430	2.45%
Mar	374,728	372,372	0.63%	310,398	307,830	0.83%	64,330	64,542	-0.33%
Apr	356,284	360,696	-1.22%	300,250	304,136	-1.28%	56,034	56,560	-0.93%
May	371,838	364,038	2.14%	313,178	305,564	2.49%	58,660	58,474	0.32%
Jun	366,016	358,974	1.96%	307,204	298,962	2.76%	58,812	60,012	-2.00%
Jul	359,816	365,790	-1.63%	302,164	307,422	-1.71%	57,652	58,368	-1.23%
Aug	363,970	355,704	2.32%	310,300	301,080	3.06%	53,670	54,624	-1.75%
Sep	373,452	361,326	3.36%	319,256	310,442	2.84%	54,196	50,884	6.51%
Total	4,335,690	4,280,736	1.28%	3,648,540	3,590,006	1.63%	687,150	690,730	-0.52%

Source: ETMSC  
Note: International flights include US to Foreign, Foreign to US and all foreign operations.

### 6.Top Ten Airports for Domestic Business Jet Operations Oct 15 - Sep 16



Source: ETMSC

### Comments: