



1.Total Business Jet Operations



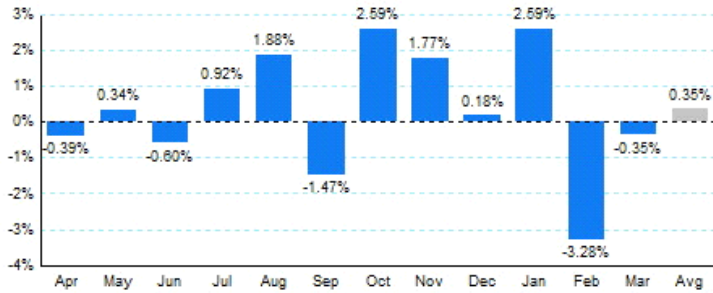
Source: ETMSC
Note: Operations refer to arrivals and departures.

4.Overall Trends (Calendar Year)

| Year | Total | | Domestic | | International | |
|-------|------------|---------|------------|---------|---------------|---------|
| | Operations | Change | Operations | Change | Operations | Change |
| 2005 | 4,727,826 | | 4,191,692 | | 536,134 | |
| 2006 | 4,745,746 | 0.38% | 4,166,506 | -0.60% | 579,240 | 8.04% |
| 2007 | 4,824,960 | 1.67% | 4,180,510 | 0.34% | 644,450 | 11.26% |
| 2008 | 4,291,104 | -11.06% | 3,681,606 | -11.93% | 609,498 | -5.42% |
| 2009 | 3,449,204 | -19.62% | 2,929,476 | -20.43% | 519,728 | -14.73% |
| 2010 | 3,842,314 | 11.40% | 3,212,132 | 9.65% | 630,182 | 21.25% |
| 2011 | 3,955,400 | 2.94% | 3,323,596 | 3.47% | 631,804 | 0.26% |
| 2012 | 3,982,236 | 0.68% | 3,315,438 | -0.25% | 666,798 | 5.54% |
| 2013* | 982,146 | | 812,562 | | 169,584 | |

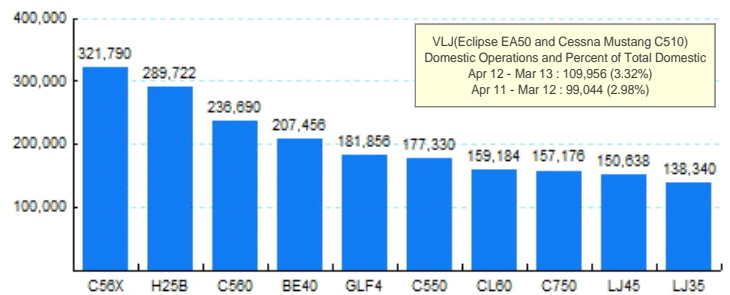
* - Year to date
Source: ETMSC
Note: International flights include US to Foreign, Foreign to US and all foreign operations.

2.Year Over Year Change in Business Jet Operations Apr 12 - Mar 13 vs. Apr 11 - Mar 12



Source: ETMSC

5.Top Ten Aircraft for Domestic Business Jet Operations Apr 12 - Mar 13



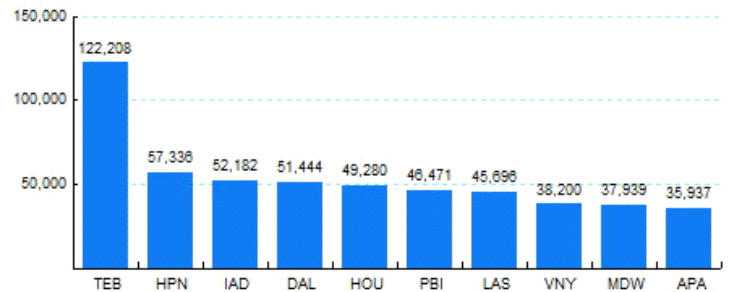
Source: ETMSC

3.Monthly Trends

| Month | Total | | | Domestic | | | International | | |
|-------|-----------|-----------|--------|-----------|-----------|--------|---------------|-----------|--------|
| | 2012-2013 | 2011-2012 | Change | 2012-2013 | 2011-2012 | Change | 2012-2013 | 2011-2012 | Change |
| Apr | 334,644 | 335,968 | -0.39% | 278,978 | 278,508 | 0.17% | 55,666 | 57,460 | -3.12% |
| May | 343,918 | 342,764 | 0.34% | 287,836 | 286,258 | 0.55% | 56,082 | 56,506 | -0.75% |
| Jun | 328,024 | 329,990 | -0.60% | 271,092 | 279,718 | -3.08% | 56,932 | 50,272 | 13.25% |
| Jul | 322,338 | 319,412 | 0.92% | 267,216 | 270,450 | -1.20% | 55,122 | 48,962 | 12.58% |
| Aug | 339,570 | 333,312 | 1.88% | 286,980 | 282,140 | 1.72% | 52,590 | 51,172 | 2.77% |
| Sep | 324,458 | 329,308 | -1.47% | 271,124 | 278,392 | -2.61% | 53,334 | 50,916 | 4.75% |
| Oct | 351,366 | 342,508 | 2.59% | 297,360 | 290,572 | 2.34% | 54,006 | 51,936 | 3.99% |
| Nov | 340,076 | 334,156 | 1.77% | 281,208 | 281,780 | -0.20% | 58,868 | 52,376 | 12.39% |
| Dec | 311,916 | 311,346 | 0.18% | 255,858 | 257,328 | -0.57% | 56,058 | 54,018 | 3.78% |
| Jan | 320,226 | 312,136 | 2.59% | 265,006 | 259,080 | 2.29% | 55,220 | 53,056 | 4.08% |
| Feb | 313,728 | 324,368 | -3.28% | 261,520 | 271,718 | -3.75% | 52,208 | 52,650 | -0.84% |
| Mar | 348,192 | 349,422 | -0.35% | 286,036 | 286,988 | -0.33% | 62,156 | 62,434 | -0.45% |
| Total | 3,978,456 | 3,964,690 | 0.35% | 3,310,214 | 3,322,932 | -0.38% | 668,242 | 641,758 | 4.13% |

Source: ETMSC
Note: International flights include US to Foreign, Foreign to US and all foreign operations.

6.Top Ten Airports for Domestic Business Jet Operations Apr 12 - Mar 13



Source: ETMSC

Comments: