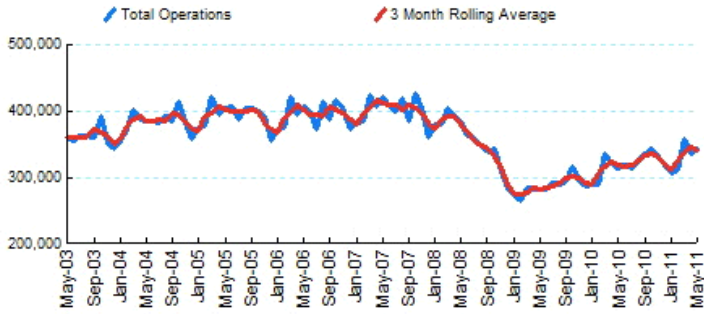




1.Total Business Jet Operations



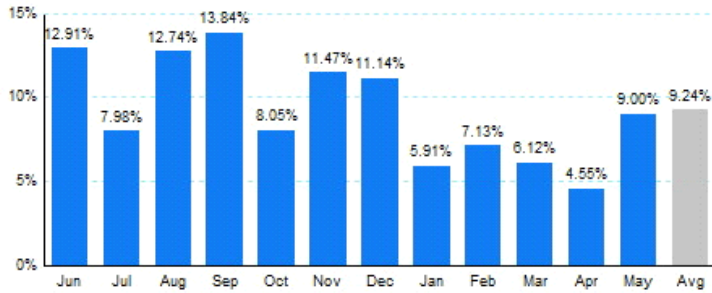
Source: ETMSC
Note: Operations refer to arrivals and departures.

4.Overall Trends (Calendar Year)

| Year | Total | | Domestic | | International | |
|-------|------------|---------|------------|---------|---------------|---------|
| | Operations | Change | Operations | Change | Operations | Change |
| 2005 | 4,727,826 | | 4,191,692 | | 536,134 | |
| 2006 | 4,745,746 | 0.38% | 4,166,506 | -0.60% | 579,240 | 8.04% |
| 2007 | 4,824,960 | 1.67% | 4,180,510 | 0.34% | 644,450 | 11.26% |
| 2008 | 4,291,104 | -11.06% | 3,681,606 | -11.93% | 609,498 | -5.42% |
| 2009 | 3,449,204 | -19.62% | 2,929,476 | -20.43% | 519,728 | -14.73% |
| 2010 | 3,842,314 | 11.40% | 3,212,132 | 9.65% | 630,182 | 21.25% |
| 2011* | 1,655,368 | | 1,383,216 | | 272,152 | |

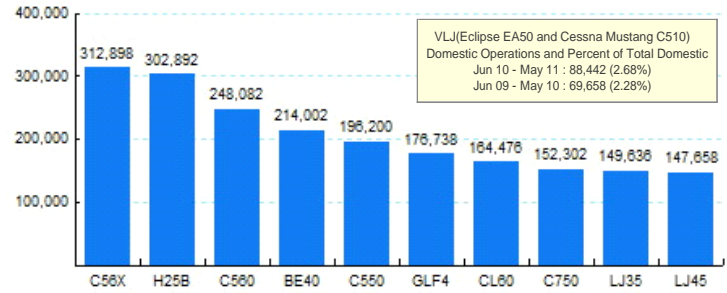
* - Year to date
Source: ETMSC
Note: International flights include US to Foreign, Foreign to US and all foreign operations.

**2.Year Over Year Change in Business Jet Operations
Jun 10 - May 11 vs. Jun 09 - May 10**



Source: ETMSC

**5.Top Ten Aircraft for Domestic Business Jet Operations
Jun 10 - May 11**



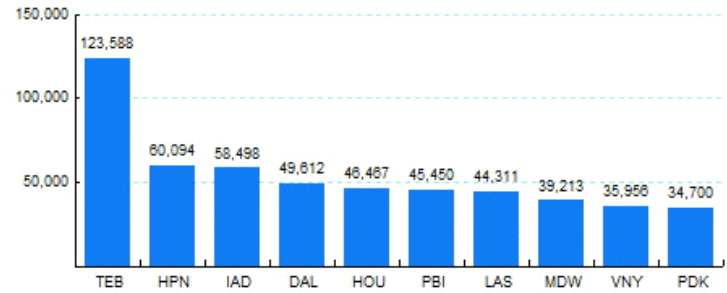
Source: ETMSC

3.Monthly Trends

| Month | Total | | | Domestic | | | International | | |
|-------|-----------|-----------|--------|-----------|-----------|--------|---------------|-----------|--------|
| | 2010-2011 | 2009-2010 | Change | 2010-2011 | 2009-2010 | Change | 2010-2011 | 2009-2010 | Change |
| Jun | 319,276 | 282,758 | 12.91% | 267,150 | 238,710 | 11.91% | 52,126 | 44,048 | 18.34% |
| Jul | 314,802 | 291,546 | 7.98% | 265,510 | 247,904 | 7.10% | 49,292 | 43,642 | 12.95% |
| Aug | 326,170 | 289,310 | 12.74% | 274,352 | 248,338 | 10.48% | 51,818 | 40,972 | 26.47% |
| Sep | 335,556 | 294,774 | 13.84% | 273,324 | 251,718 | 8.58% | 62,232 | 43,056 | 44.54% |
| Oct | 342,632 | 317,112 | 8.05% | 290,840 | 272,156 | 6.87% | 51,792 | 44,956 | 15.21% |
| Nov | 331,050 | 296,990 | 11.47% | 278,240 | 252,678 | 10.12% | 52,810 | 44,312 | 19.18% |
| Dec | 318,890 | 286,924 | 11.14% | 262,450 | 241,746 | 8.56% | 56,440 | 45,178 | 24.93% |
| Jan | 307,080 | 289,948 | 5.91% | 263,152 | 244,278 | 7.73% | 43,928 | 45,670 | -3.81% |
| Feb | 311,400 | 290,664 | 7.13% | 258,702 | 242,748 | 6.57% | 52,698 | 47,916 | 9.98% |
| Mar | 358,156 | 337,508 | 6.12% | 296,596 | 276,602 | 7.23% | 61,560 | 60,906 | 1.07% |
| Apr | 335,968 | 321,360 | 4.55% | 278,508 | 268,682 | 3.66% | 57,460 | 52,678 | 9.08% |
| May | 342,764 | 314,458 | 9.00% | 286,258 | 267,956 | 6.83% | 56,506 | 46,502 | 21.51% |
| Total | 3,943,744 | 3,613,352 | 9.14% | 3,295,082 | 3,053,516 | 7.91% | 648,662 | 559,836 | 15.87% |

Source: ETMSC
Note: International flights include US to Foreign, Foreign to US and all foreign operations.

**6.Top Ten Airports for Domestic Business Jet Operations
Jun 10 - May 11**



Source: ETMSC

Comments: