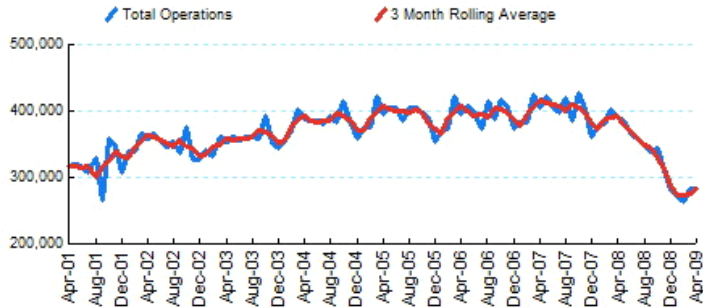




1.Total Business Jet Operations



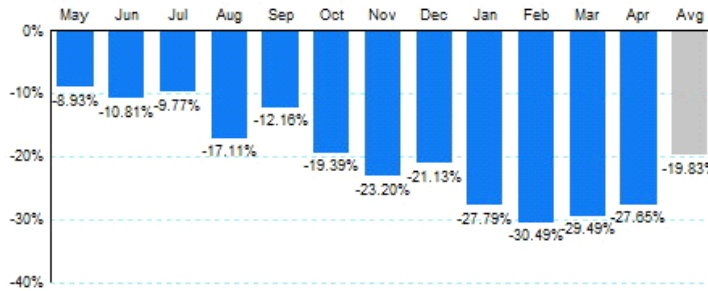
Source: ETMSC
Note: Operations refer to arrivals and departures.

4.Overall Trends (Calendar Year)

| Year | Total | | Domestic | | International | |
|-------|------------|---------|------------|---------|---------------|--------|
| | Operations | Change | Operations | Change | Operations | Change |
| 2005 | 4,727,826 | | 4,191,692 | | 536,134 | |
| 2006 | 4,745,746 | 0.38% | 4,166,506 | -0.60% | 579,240 | 8.04% |
| 2007 | 4,824,960 | 1.67% | 4,180,510 | 0.34% | 644,450 | 11.26% |
| 2008 | 4,291,104 | -11.06% | 3,681,606 | -11.93% | 609,498 | -5.42% |
| 2009* | 1,107,110 | | 935,872 | | 171,238 | |

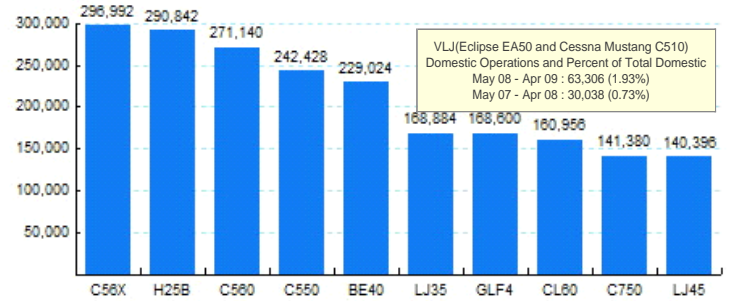
* - Year to date
Source: ETMSC
Note: International flights include US to Foreign, Foreign to US and all foreign operations.

2. Year Over Year Change in Business Jet Operations May 08 - Apr 09 vs. May 07 - Apr 08



Source: ETMSC

5.Top Ten Aircraft for Domestic Business Jet Operations May 08 - Apr 09



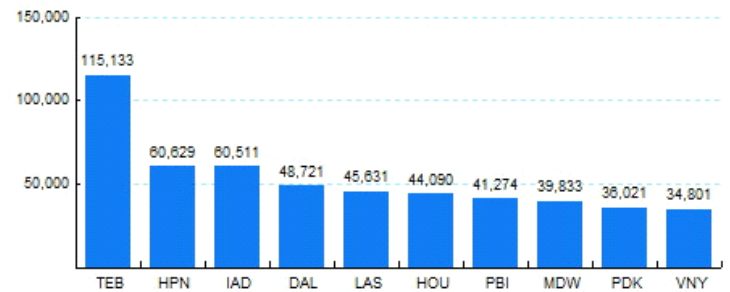
Source: ETMSC

3.Monthly Trends

| Month | Total | | | Domestic | | | International | | |
|-------|-----------|-----------|---------|-----------|-----------|---------|---------------|-----------|---------|
| | 2008-2009 | 2007-2008 | Change | 2008-2009 | 2007-2008 | Change | 2008-2009 | 2007-2008 | Change |
| May | 384,996 | 422,752 | -8.93% | 329,682 | 366,626 | -10.08% | 55,314 | 56,126 | -1.45% |
| Jun | 363,528 | 407,602 | -10.81% | 309,388 | 348,558 | -11.24% | 54,140 | 59,044 | -8.31% |
| Jul | 360,270 | 399,286 | -9.77% | 308,542 | 343,458 | -10.17% | 51,728 | 55,828 | -7.34% |
| Aug | 347,492 | 419,198 | -17.11% | 300,298 | 365,096 | -17.75% | 47,194 | 54,102 | -12.77% |
| Sep | 339,100 | 386,034 | -12.16% | 292,942 | 334,254 | -12.36% | 46,158 | 51,780 | -10.86% |
| Oct | 344,562 | 427,452 | -19.39% | 299,520 | 373,256 | -19.75% | 45,042 | 54,196 | -16.89% |
| Nov | 310,358 | 404,138 | -23.20% | 265,836 | 350,682 | -24.19% | 44,522 | 53,456 | -16.71% |
| Dec | 284,606 | 360,848 | -21.13% | 241,646 | 309,232 | -21.86% | 42,960 | 51,616 | -16.77% |
| Jan | 274,420 | 380,022 | -27.79% | 231,098 | 325,612 | -29.03% | 43,322 | 54,410 | -20.38% |
| Feb | 264,630 | 380,724 | -30.49% | 225,034 | 326,330 | -31.04% | 39,596 | 54,394 | -27.21% |
| Mar | 284,746 | 403,832 | -29.49% | 239,184 | 343,488 | -30.37% | 45,562 | 60,344 | -24.50% |
| Apr | 283,314 | 391,614 | -27.65% | 240,556 | 338,322 | -28.90% | 42,758 | 53,292 | -19.77% |
| Total | 3,842,022 | 4,783,502 | -19.68% | 3,283,726 | 4,124,914 | -20.39% | 558,296 | 658,588 | -15.23% |

Source: ETMSC
Note: International flights include US to Foreign, Foreign to US and all foreign operations.

6.Top Ten Airports for Domestic Business Jet Operations May 08 - Apr 09



Source: ETMSC

Comments:
