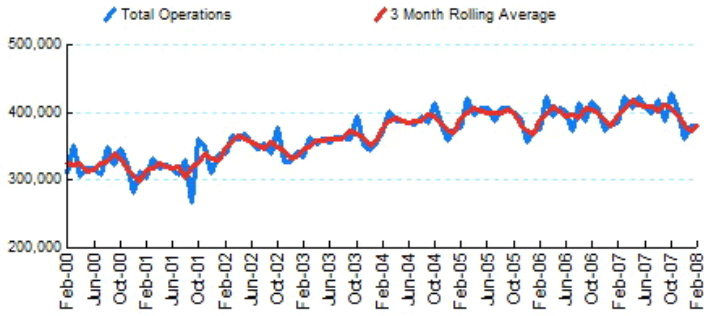


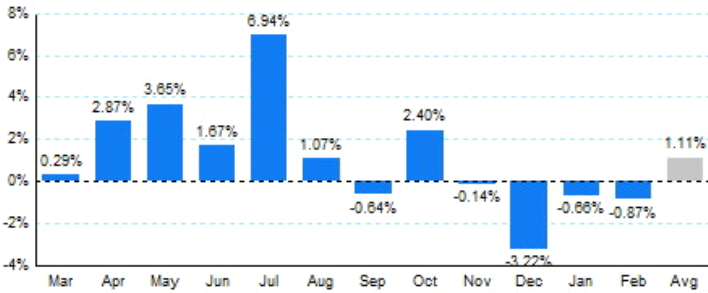


## 1.Total Business Jet Operations



Source: ETMSC  
Note: Operations refer to arrivals and departures.

## 2.Year Over Year Change in Business Jet Operations Mar 07 - Feb 08 vs. Mar 06 - Feb 07



Source: ETMSC

## 3.Monthly Trends

Month	Total			Domestic			International		
	2007-2008	2006-2007	Change	2007-2008	2006-2007	Change	2007-2008	2006-2007	Change
Mar	424,430	423,210	0.29%	366,804	371,292	-1.21%	57,626	51,918	10.99%
Apr	406,614	395,272	2.87%	353,574	347,790	1.66%	53,040	47,482	11.71%
May	422,752	407,852	3.65%	366,626	357,650	2.51%	56,126	50,202	11.80%
Jun	407,602	400,910	1.67%	348,558	348,636	-0.02%	59,044	52,274	12.95%
Jul	399,286	373,374	6.94%	343,458	325,748	5.44%	55,828	47,626	17.22%
Aug	419,198	414,742	1.07%	365,096	366,554	-0.40%	54,102	48,188	12.27%
Sep	386,034	388,532	-0.64%	334,254	340,038	-1.70%	51,780	48,494	6.78%
Oct	427,452	417,422	2.40%	373,256	370,278	0.80%	54,196	47,144	14.96%
Nov	404,138	404,704	-0.14%	350,682	356,182	-1.54%	53,456	48,522	10.17%
Dec	360,848	372,866	-3.22%	309,232	325,002	-4.85%	51,616	47,864	7.84%
Jan	380,022	382,552	-0.66%	325,612	333,208	-2.28%	54,410	49,344	10.27%
Feb	380,724	384,054	-0.87%	326,330	335,762	-2.81%	54,394	48,292	12.64%
Total	4,819,100	4,765,490	1.12%	4,163,482	4,178,140	-0.35%	655,618	587,350	11.62%

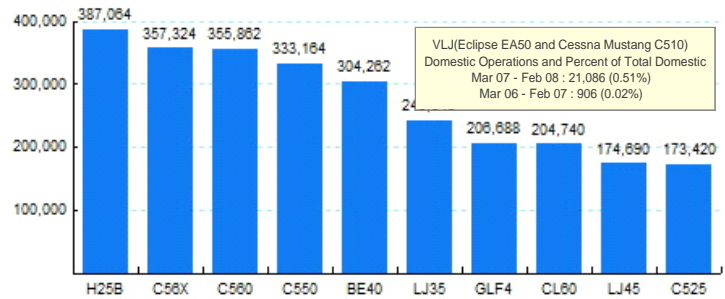
Source: ETMSC  
Note: International flights include US to Foreign, Foreign to US and all foreign operations.

## 4.Overall Trends (Calendar Year)

Year	Total		Domestic		International	
	Operations	Change	Operations	Change	Operations	Change
2005	4,727,826		4,191,692		536,134	
2006	4,745,746	0.38%	4,166,506	-0.60%	579,240	8.04%
2007	4,824,960	1.67%	4,180,510	0.34%	644,450	11.26%
2008*	760,746		651,942		108,804	

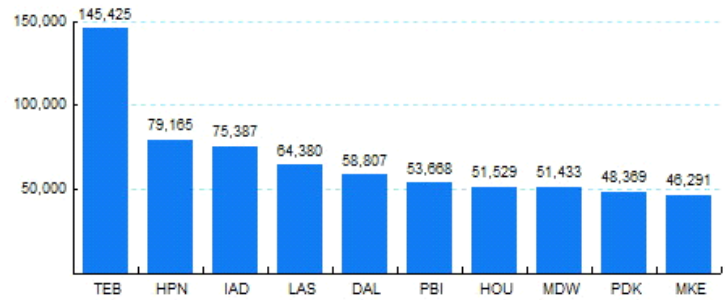
\* - Year to date  
Source: ETMSC  
Note: International flights include US to Foreign, Foreign to US and all foreign operations.

## 5.Top Ten Aircraft for Domestic Business Jet Operations Mar 07 - Feb 08



Source: ETMSC

## 6.Top Ten Airports for Domestic Business Jet Operations Mar 07 - Feb 08



Source: ETMSC

Comments: