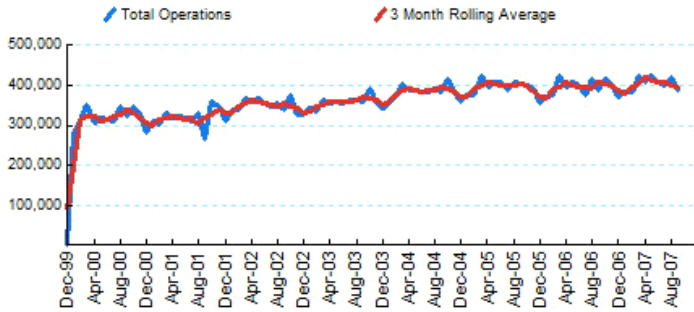


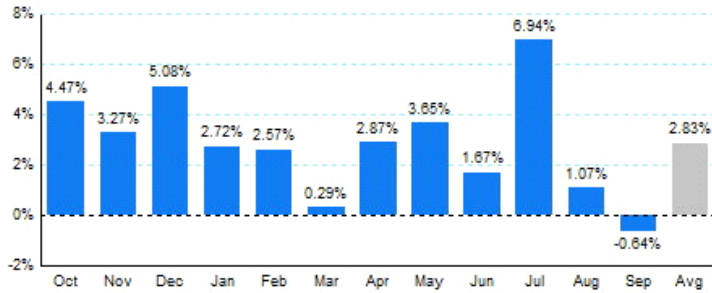


## 1.Total Business Jet Operations



Source: ETMSC  
Note: Operations refer to arrivals and departures.

## 2.Year Over Year Change in Business Jet Operations Oct 06 - Sep 07 vs. Oct 05 - Sep 06



Source: ETMSC

## 3.Monthly Trends

Month	Total			Domestic			International		
	2006-2007	2005-2006	Change	2006-2007	2005-2006	Change	2006-2007	2005-2006	Change
Oct	417,422	399,566	4.47%	370,278	356,720	3.80%	47,144	42,846	10.03%
Nov	404,704	391,890	3.27%	356,182	347,780	2.42%	48,522	44,110	10.00%
Dec	372,866	354,838	5.08%	325,002	312,512	4.00%	47,864	42,326	13.08%
Jan	382,552	372,418	2.72%	333,208	327,140	1.85%	49,344	45,278	8.98%
Feb	384,054	374,444	2.57%	335,762	330,196	1.69%	48,292	44,248	9.14%
Mar	424,430	423,210	0.29%	366,804	371,292	-1.21%	57,626	51,918	10.99%
Apr	406,614	395,272	2.87%	353,574	347,790	1.66%	53,040	47,482	11.71%
May	422,752	407,852	3.65%	366,626	357,650	2.51%	56,126	50,202	11.80%
Jun	407,602	400,910	1.67%	348,558	348,636	-0.02%	59,044	52,274	12.95%
Jul	399,286	373,374	6.94%	343,458	325,748	5.44%	55,828	47,626	17.22%
Aug	419,198	414,742	1.07%	365,096	366,554	-0.40%	54,102	48,188	12.27%
Sep	386,034	388,532	-0.64%	334,254	340,038	-1.70%	51,780	48,494	6.78%
Total	4,827,514	4,697,048	2.78%	4,198,802	4,132,056	1.62%	628,712	564,992	11.28%

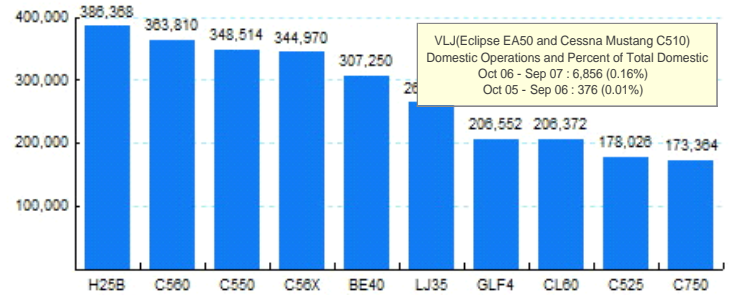
Source: ETMSC  
Note: International flights include US to Foreign, Foreign to US and all foreign operations.

## 4.Overall Trends (Calendar Year)

Year	Total		Domestic		International	
	Operations	Change	Operations	Change	Operations	Change
2005	4,727,826		4,191,692		536,134	
2006	4,745,746	0.38%	4,166,506	-0.60%	579,240	8.04%
2007*	3,632,522		3,147,340		485,182	

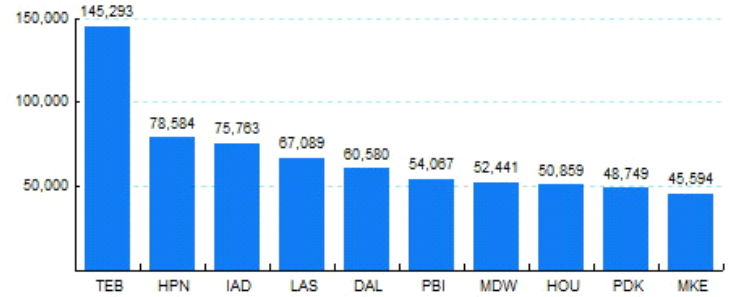
\* - Year to date  
Source: ETMSC  
Note: International flights include US to Foreign, Foreign to US and all foreign operations.

## 5.Top Ten Aircraft for Domestic Business Jet Operations Oct 06 - Sep 07



Source: ETMSC

## 6.Top Ten Airports for Domestic Business Jet Operations Oct 06 - Sep 07



Source: ETMSC

Comments: