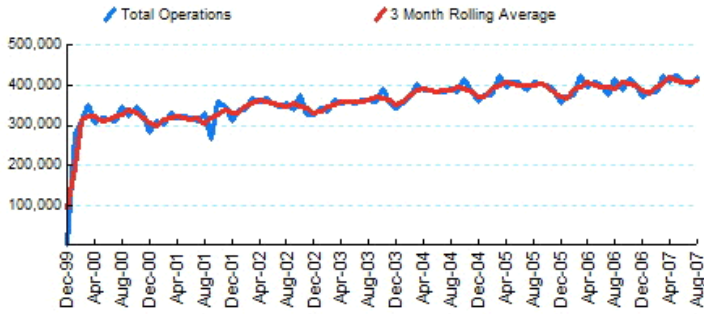




1.Total Business Jet Operations



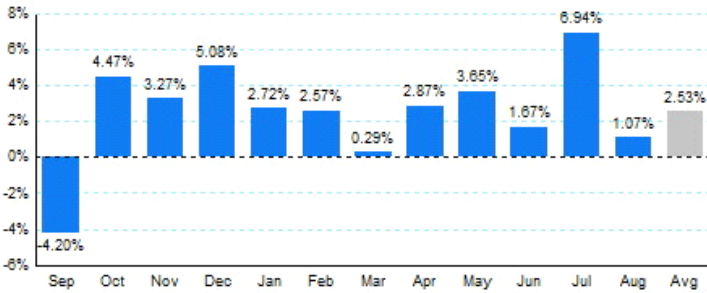
Source: ETMSC
Note: Operations refer to arrivals and departures.

4.Overall Trends (Calendar Year)

Year	Total		Domestic		International	
	Operations	Change	Operations	Change	Operations	Change
2005	4,727,826		4,191,692		536,134	
2006	4,745,746	0.38%	4,166,506	-0.60%	579,240	8.04%
2007*	3,246,488		2,813,086		433,402	

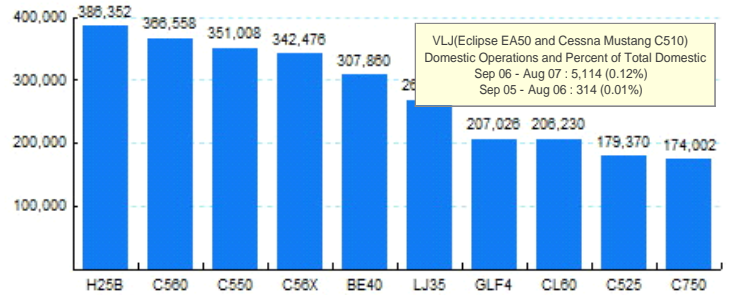
* - Year to date
Source: ETMSC
Note: International flights include US to Foreign, Foreign to US and all foreign operations.

2.Year Over Year Change in Business Jet Operations Sep 06 - Aug 07 vs. Sep 05 - Aug 06



Source: ETMSC

5.Top Ten Aircraft for Domestic Business Jet Operations Sep 06 - Aug 07



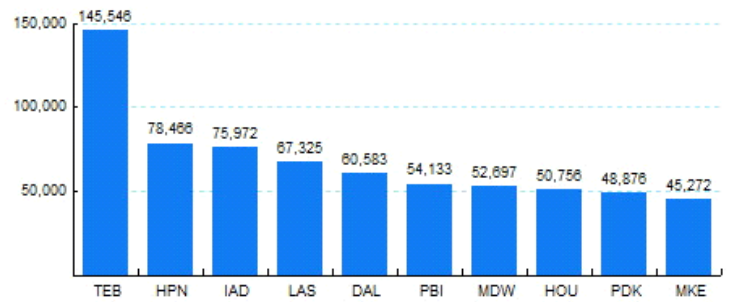
Source: ETMSC

3.Monthly Trends

Month	Total			Domestic			International		
	2006-2007	2005-2006	Change	2006-2007	2005-2006	Change	2006-2007	2005-2006	Change
Sep	388,532	405,548	-4.20%	340,038	361,174	-5.85%	48,494	44,374	9.28%
Oct	417,422	399,566	4.47%	370,278	356,720	3.80%	47,144	42,846	10.03%
Nov	404,704	391,890	3.27%	356,182	347,780	2.42%	48,522	44,110	10.00%
Dec	372,866	354,838	5.08%	325,002	312,512	4.00%	47,864	42,326	13.08%
Jan	382,552	372,418	2.72%	333,208	327,140	1.85%	49,344	45,278	8.98%
Feb	384,054	374,444	2.57%	335,762	330,196	1.69%	48,292	44,248	9.14%
Mar	424,430	423,210	0.29%	366,804	371,292	-1.21%	57,626	51,918	10.99%
Apr	406,614	395,272	2.87%	353,574	347,790	1.66%	53,040	47,482	11.71%
May	422,752	407,852	3.65%	366,626	357,650	2.51%	56,126	50,202	11.80%
Jun	407,602	400,910	1.67%	348,558	348,636	-0.02%	59,044	52,274	12.95%
Jul	399,286	373,374	6.94%	343,458	325,748	5.44%	55,828	47,626	17.22%
Aug	419,198	414,742	1.07%	365,096	366,554	-0.40%	54,102	48,188	12.27%
Total	4,830,012	4,714,064	2.46%	4,204,586	4,153,192	1.24%	625,426	560,872	11.51%

Source: ETMSC
Note: International flights include US to Foreign, Foreign to US and all foreign operations.

6.Top Ten Airports for Domestic Business Jet Operations Sep 06 - Aug 07



Source: ETMSC

Comments: