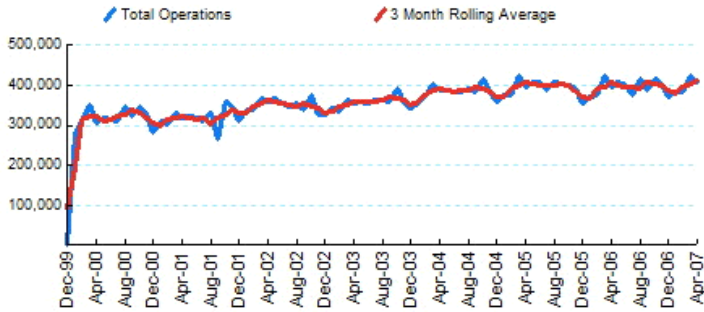




1.Total Business Jet Operations



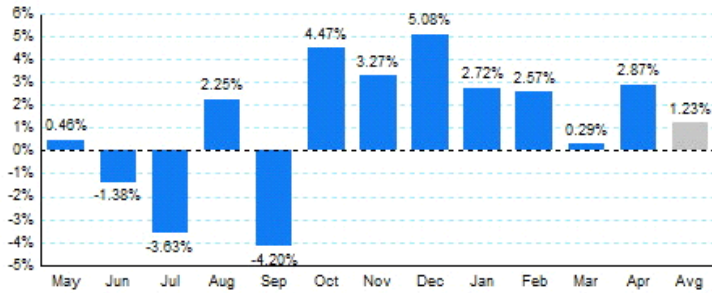
Source: ETMSC
Note: Operations refer to arrivals and departures.

4.Overall Trends (Calendar Year)

Year	Total		Domestic		International	
	Operations	Change	Operations	Change	Operations	Change
2005	4,727,826		4,191,692		536,134	
2006	4,745,746	0.38%	4,166,506	-0.60%	579,240	8.04%
2007*	1,597,650		1,389,348		208,302	

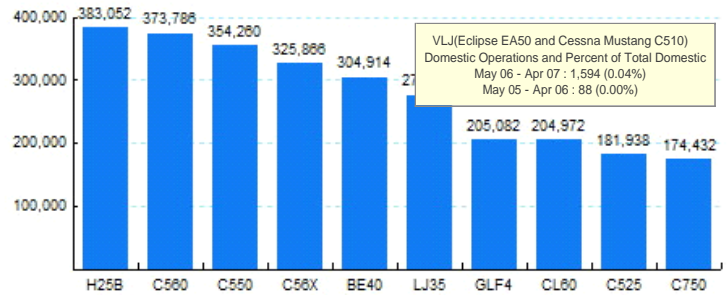
* - Year to date
Source: ETMSC
Note: International flights include US to Foreign, Foreign to US and all foreign operations.

2.Year Over Year Change in Business Jet Operations May 06 - Apr 07 vs. May 05 - Apr 06



Source: ETMSC

5.Top Ten Aircraft for Domestic Business Jet Operations May 06 - Apr 07



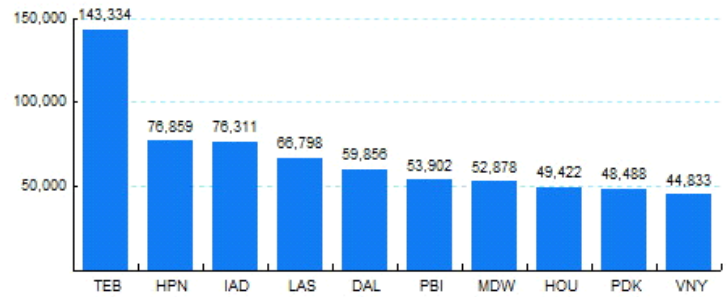
Source: ETMSC

3.Monthly Trends

Month	Total			Domestic			International		
	2006-2007	2005-2006	Change	2006-2007	2005-2006	Change	2006-2007	2005-2006	Change
May	407,852	405,990	0.46%	357,650	359,074	-0.40%	50,202	46,916	7.00%
Jun	400,910	406,526	-1.38%	348,636	357,250	-2.41%	52,274	49,276	6.08%
Jul	373,374	387,440	-3.63%	325,748	343,284	-5.11%	47,626	44,156	7.86%
Aug	414,742	405,604	2.25%	366,554	362,830	1.03%	48,188	42,774	12.66%
Sep	388,532	405,548	-4.20%	340,038	361,174	-5.85%	48,494	44,374	9.28%
Oct	417,422	399,566	4.47%	370,278	356,720	3.80%	47,144	42,846	10.03%
Nov	404,704	391,890	3.27%	356,182	347,780	2.42%	48,522	44,110	10.00%
Dec	372,866	354,838	5.08%	325,002	312,512	4.00%	47,864	42,326	13.08%
Jan	382,552	372,418	2.72%	333,208	327,140	1.85%	49,344	45,278	8.98%
Feb	384,054	374,444	2.57%	335,762	330,196	1.69%	48,292	44,248	9.14%
Mar	424,430	423,210	0.29%	366,804	371,292	-1.21%	57,626	51,918	10.99%
Apr	406,614	395,272	2.87%	353,574	347,790	1.66%	53,040	47,482	11.71%
Total	4,778,052	4,722,746	1.17%	4,179,436	4,177,042	0.06%	598,616	545,704	9.70%

Source: ETMSC
Note: International flights include US to Foreign, Foreign to US and all foreign operations.

6.Top Ten Airports for Domestic Business Jet Operations May 06 - Apr 07



Source: ETMSC

Comments: