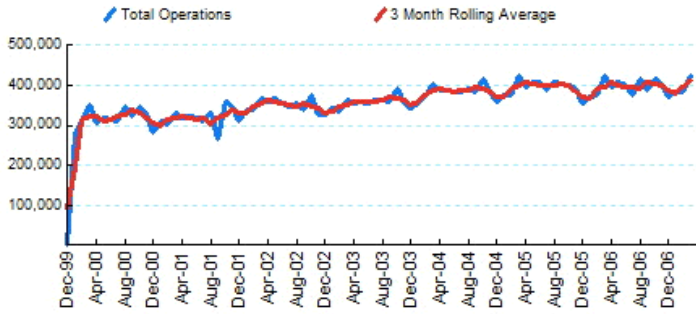




1.Total Business Jet Operations



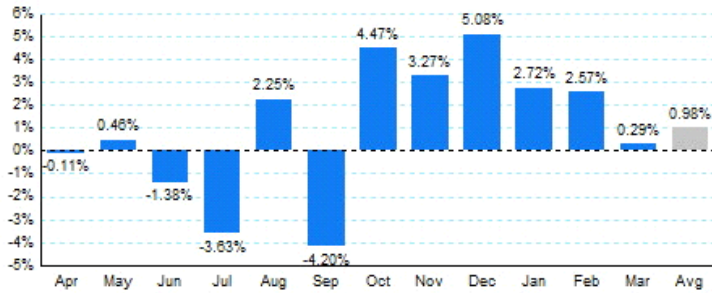
Source: ETMSC
Note: Operations refer to arrivals and departures.

4.Overall Trends (Calendar Year)

| Year | Total | | Domestic | | International | |
|-------|------------|--------|------------|--------|---------------|--------|
| | Operations | Change | Operations | Change | Operations | Change |
| 2005 | 4,727,826 | | 4,191,692 | | 536,134 | |
| 2006 | 4,745,746 | 0.38% | 4,166,506 | -0.60% | 579,240 | 8.04% |
| 2007* | 1,191,036 | | 1,035,774 | | 155,262 | |

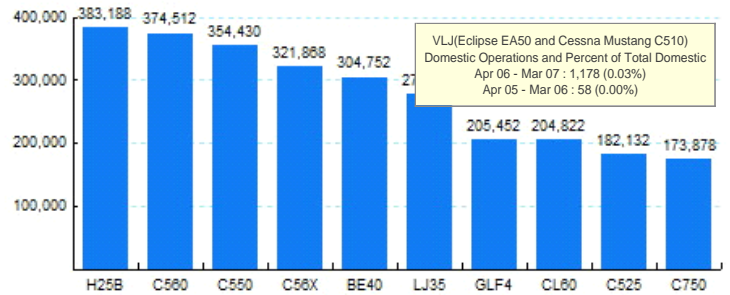
* - Year to date
Source: ETMSC
Note: International flights include US to Foreign, Foreign to US and all foreign operations.

2.Year Over Year Change in Business Jet Operations Apr 06 - Mar 07 vs. Apr 05 - Mar 06



Source: ETMSC

5.Top Ten Aircraft for Domestic Business Jet Operations Apr 06 - Mar 07



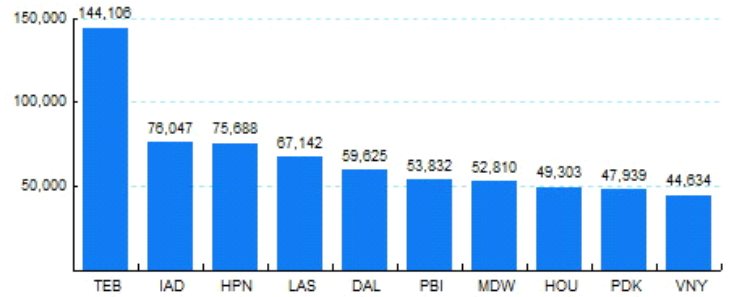
Source: ETMSC

3.Monthly Trends

| Month | Total | | | Domestic | | | International | | |
|-------|-----------|-----------|--------|-----------|-----------|--------|---------------|-----------|--------|
| | 2006-2007 | 2005-2006 | Change | 2006-2007 | 2005-2006 | Change | 2006-2007 | 2005-2006 | Change |
| Apr | 395,272 | 395,726 | -0.11% | 347,790 | 351,698 | -1.11% | 47,482 | 44,028 | 7.85% |
| May | 407,852 | 405,990 | 0.46% | 357,650 | 359,074 | -0.40% | 50,202 | 46,916 | 7.00% |
| Jun | 400,910 | 406,526 | -1.38% | 348,636 | 357,250 | -2.41% | 52,274 | 49,276 | 6.08% |
| Jul | 373,374 | 387,440 | -3.63% | 325,748 | 343,284 | -5.11% | 47,626 | 44,156 | 7.86% |
| Aug | 414,742 | 405,604 | 2.25% | 366,554 | 362,830 | 1.03% | 48,188 | 42,774 | 12.66% |
| Sep | 388,532 | 405,548 | -4.20% | 340,038 | 361,174 | -5.85% | 48,494 | 44,374 | 9.28% |
| Oct | 417,422 | 399,566 | 4.47% | 370,278 | 356,720 | 3.80% | 47,144 | 42,846 | 10.03% |
| Nov | 404,704 | 391,890 | 3.27% | 356,182 | 347,780 | 2.42% | 48,522 | 44,110 | 10.00% |
| Dec | 372,866 | 354,838 | 5.08% | 325,002 | 312,512 | 4.00% | 47,864 | 42,326 | 13.08% |
| Jan | 382,552 | 372,418 | 2.72% | 333,208 | 327,140 | 1.85% | 49,344 | 45,278 | 8.98% |
| Feb | 384,054 | 374,444 | 2.57% | 335,762 | 330,196 | 1.69% | 48,292 | 44,248 | 9.14% |
| Mar | 424,430 | 423,210 | 0.29% | 366,804 | 371,292 | -1.21% | 57,626 | 51,918 | 10.99% |
| Total | 4,766,710 | 4,723,200 | 0.92% | 4,173,652 | 4,180,950 | -0.17% | 593,058 | 542,250 | 9.37% |

Source: ETMSC
Note: International flights include US to Foreign, Foreign to US and all foreign operations.

6.Top Ten Airports for Domestic Business Jet Operations Apr 06 - Mar 07



Source: ETMSC

Comments: