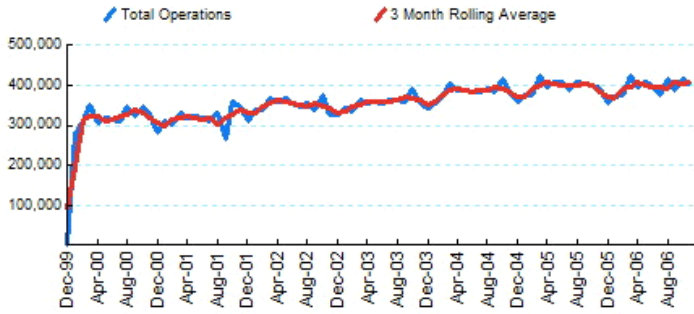




## 1.Total Business Jet Operations



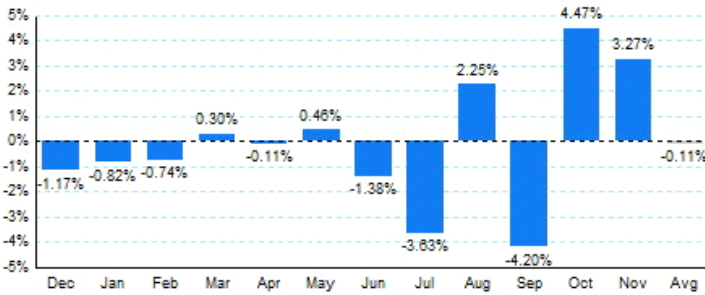
Source: ETMSC  
Note: Operations refer to arrivals and departures.

## 4.Overall Trends (Calendar Year)

Year	Total		Domestic		International	
	Operations	Change	Operations	Change	Operations	Change
2005	4,727,826		4,191,692		536,134	
2006*	4,372,880		3,841,504		531,376	

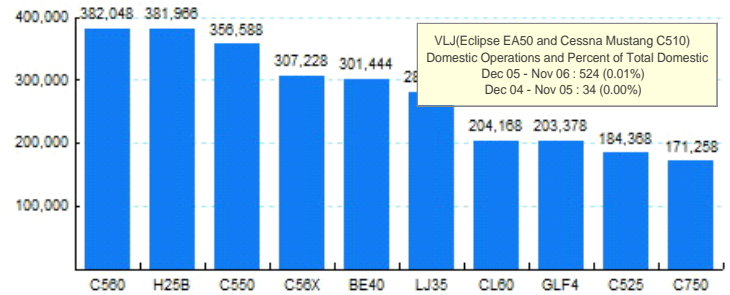
\* - Year to date  
Source: ETMSC  
Note: International flights include US to Foreign, Foreign to US and all foreign operations.

## 2.Year Over Year Change in Business Jet Operations Dec 05 - Nov 06 vs. Dec 04 - Nov 05



Source: ETMSC

## 5.Top Ten Aircraft for Domestic Business Jet Operations Dec 05 - Nov 06



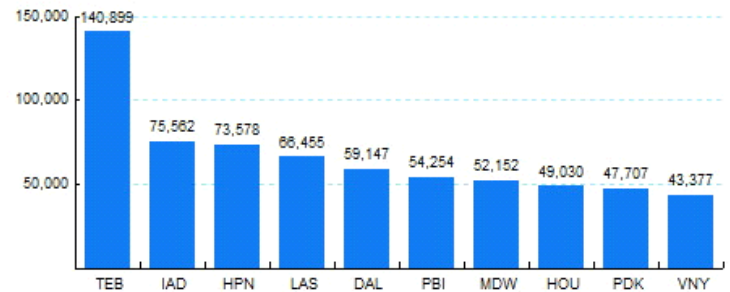
Source: ETMSC

## 3.Monthly Trends

Month	Total			Domestic			International		
	2005-2006	2004-2005	Change	2005-2006	2004-2005	Change	2005-2006	2004-2005	Change
Dec	354,838	359,024	-1.17%	312,512	319,586	-2.21%	42,326	39,438	7.32%
Jan	372,418	375,494	-0.82%	327,140	332,958	-1.75%	45,278	42,536	6.45%
Feb	374,444	377,240	-0.74%	330,196	335,066	-1.45%	44,248	42,174	4.92%
Mar	423,210	421,964	0.30%	371,292	371,346	-0.01%	51,918	50,618	2.57%
Apr	395,272	395,726	-0.11%	347,790	351,698	-1.11%	47,482	44,028	7.85%
May	407,852	405,990	0.46%	357,650	359,074	-0.40%	50,202	46,916	7.00%
Jun	400,910	406,526	-1.38%	348,636	357,250	-2.41%	52,274	49,276	6.08%
Jul	373,374	387,440	-3.63%	325,748	343,284	-5.11%	47,626	44,156	7.86%
Aug	414,742	405,604	2.25%	366,554	362,830	1.03%	48,188	42,774	12.66%
Sep	388,532	405,548	-4.20%	340,038	361,174	-5.85%	48,494	44,374	9.28%
Oct	417,422	399,566	4.47%	370,278	356,720	3.80%	47,144	42,846	10.03%
Nov	404,704	391,890	3.27%	356,182	347,780	2.42%	48,522	44,110	10.00%
Total	4,727,718	4,732,012	-0.09%	4,154,016	4,198,766	-1.07%	573,702	533,246	7.59%

Source: ETMSC  
Note: International flights include US to Foreign, Foreign to US and all foreign operations.

## 6.Top Ten Airports for Domestic Business Jet Operations Dec 05 - Nov 06



Source: ETMSC

Comments: