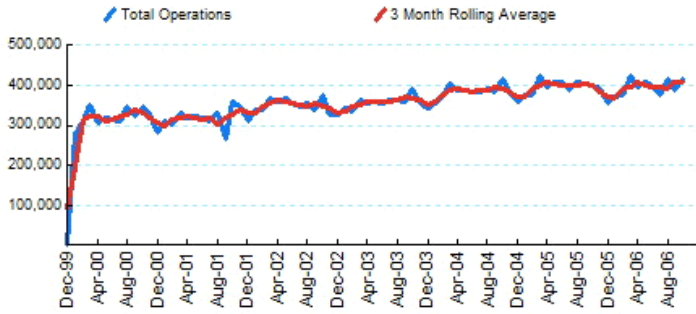




1.Total Business Jet Operations



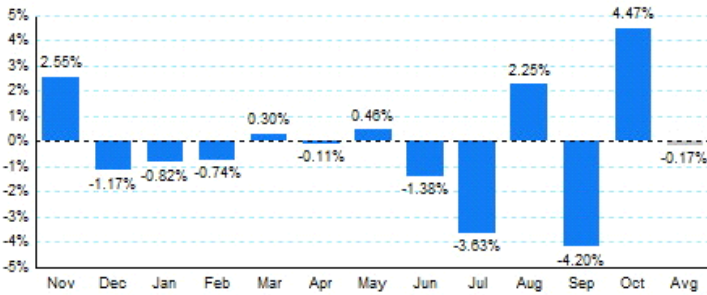
Source: ETMSC
Note: Operations refer to arrivals and departures.

4.Overall Trends (Calendar Year)

Year	Total		Domestic		International	
	Operations	Change	Operations	Change	Operations	Change
2005	4,727,826		4,191,692		536,134	
2006*	3,968,176		3,485,322		482,854	

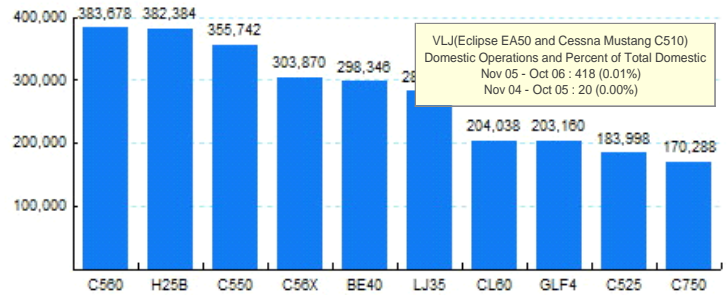
* - Year to date
Source: ETMSC
Note: International flights include US to Foreign, Foreign to US and all foreign operations.

**2.Year Over Year Change in Business Jet Operations
Nov 05 - Oct 06 vs. Nov 04 - Oct 05**



Source: ETMSC

**5.Top Ten Aircraft for Domestic Business Jet Operations
Nov 05 - Oct 06**



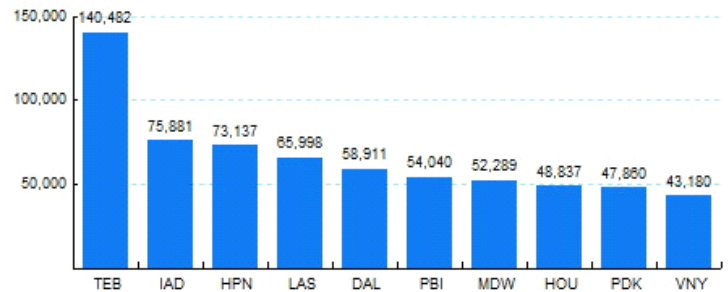
Source: ETMSC

3.Monthly Trends

Month	Total			Domestic			International		
	2005-2006	2004-2005	Change	2005-2006	2004-2005	Change	2005-2006	2004-2005	Change
Nov	391,890	382,148	2.55%	347,780	340,628	2.10%	44,110	41,520	6.24%
Dec	354,838	359,024	-1.17%	312,512	319,586	-2.21%	42,326	39,438	7.32%
Jan	372,418	375,494	-0.82%	327,140	332,958	-1.75%	45,278	42,536	6.45%
Feb	374,444	377,240	-0.74%	330,196	335,066	-1.45%	44,248	42,174	4.92%
Mar	423,210	421,964	0.30%	371,292	371,346	-0.01%	51,918	50,618	2.57%
Apr	395,272	395,726	-0.11%	347,790	351,698	-1.11%	47,482	44,028	7.85%
May	407,852	405,990	0.46%	357,650	359,074	-0.40%	50,202	46,916	7.00%
Jun	400,910	406,526	-1.38%	348,636	357,250	-2.41%	52,274	49,276	6.08%
Jul	373,374	387,440	-3.63%	325,748	343,284	-5.11%	47,626	44,156	7.86%
Aug	414,742	405,604	2.25%	366,554	362,830	1.03%	48,188	42,774	12.66%
Sep	388,532	405,548	-4.20%	340,038	361,174	-5.85%	48,494	44,374	9.28%
Oct	417,422	399,566	4.47%	370,278	356,720	3.80%	47,144	42,846	10.03%
Total	4,714,904	4,722,270	-0.16%	4,145,614	4,191,614	-1.10%	569,290	530,656	7.28%

Source: ETMSC
Note: International flights include US to Foreign, Foreign to US and all foreign operations.

**6.Top Ten Airports for Domestic Business Jet Operations
Nov 05 - Oct 06**



Source: ETMSC

Comments: