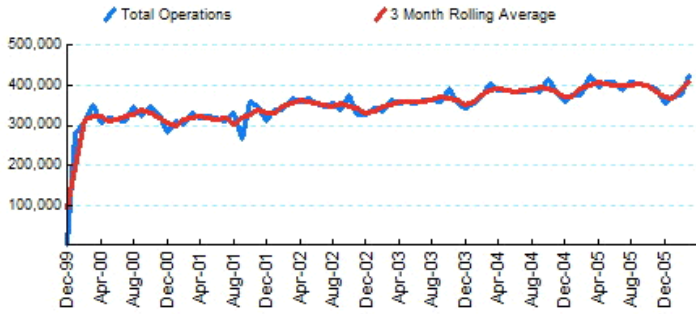




1.Total Business Jet Operations



Source: ETMSC
Note: Operations refer to arrivals and departures.

4.Overall Trends (Calendar Year)

Year	Total		Domestic		International	
	Operations	Change	Operations	Change	Operations	Change
2005	4,727,826		4,191,692		536,134	
2006*	1,170,072		1,028,628		141,444	

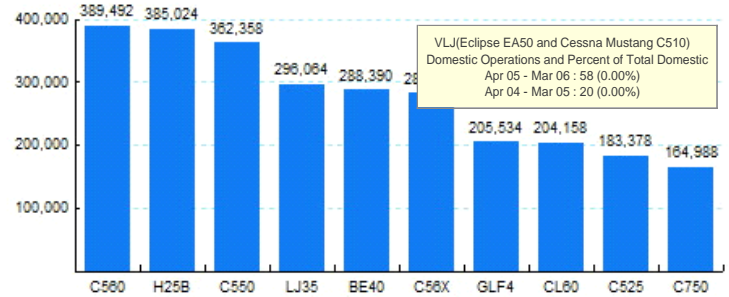
* - Year to date
Source: ETMSC
Note: International flights include US to Foreign, Foreign to US and all foreign operations.

**2.Year Over Year Change in Business Jet Operations
Apr 05 - Mar 06 vs. Apr 04 - Mar 05**



Source: ETMSC

**5.Top Ten Aircraft for Domestic Business Jet Operations
Apr 05 - Mar 06**



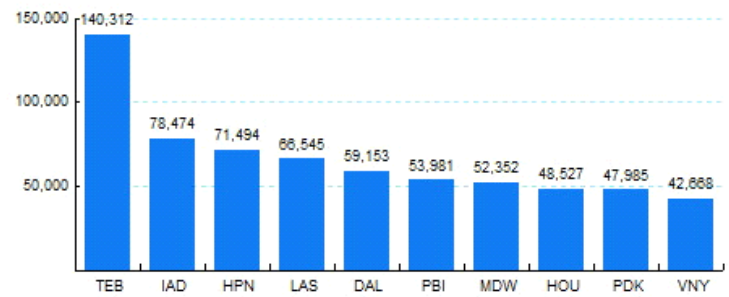
Source: ETMSC

3.Monthly Trends

Month	Total			Domestic			International		
	2005-2006	2004-2005	Change	2005-2006	2004-2005	Change	2005-2006	2004-2005	Change
Apr	395,726	388,580	1.84%	351,698	343,536	2.38%	44,028	45,044	-2.26%
May	405,990	385,990	5.18%	359,074	342,456	4.85%	46,916	43,534	7.77%
Jun	406,526	385,104	5.56%	357,250	339,638	5.19%	49,276	45,466	8.38%
Jul	387,440	381,650	1.52%	343,284	339,004	1.26%	44,156	42,646	3.54%
Aug	405,604	393,606	3.05%	362,830	353,060	2.77%	42,774	40,546	5.49%
Sep	405,548	384,772	5.40%	361,174	343,646	5.10%	44,374	41,126	7.90%
Oct	399,566	414,478	-3.60%	356,720	373,668	-4.54%	42,846	40,810	4.99%
Nov	391,890	382,148	2.55%	347,780	340,628	2.10%	44,110	41,520	6.24%
Dec	354,838	359,024	-1.17%	312,512	319,586	-2.21%	42,326	39,438	7.32%
Jan	372,418	375,494	-0.82%	327,140	332,958	-1.75%	45,278	42,536	6.45%
Feb	374,444	377,240	-0.74%	330,196	335,066	-1.45%	44,248	42,174	4.92%
Mar	423,210	421,964	0.30%	371,292	371,346	-0.01%	51,918	50,618	2.57%
Total	4,723,200	4,650,050	1.57%	4,180,950	4,134,592	1.12%	542,250	515,458	5.20%

Source: ETMSC
Note: International flights include US to Foreign, Foreign to US and all foreign operations.

**6.Top Ten Airports for Domestic Business Jet Operations
Apr 05 - Mar 06**



Source: ETMSC

Comments: