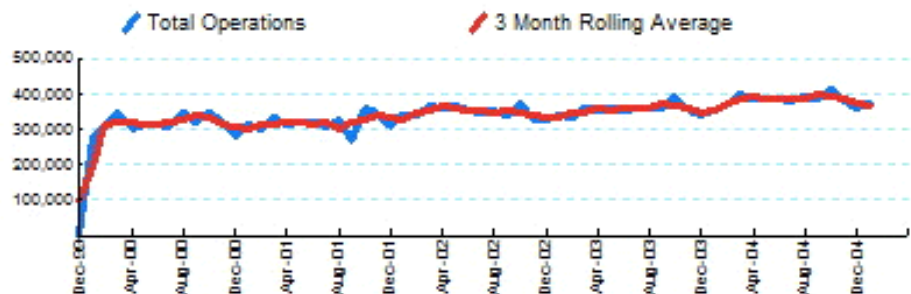


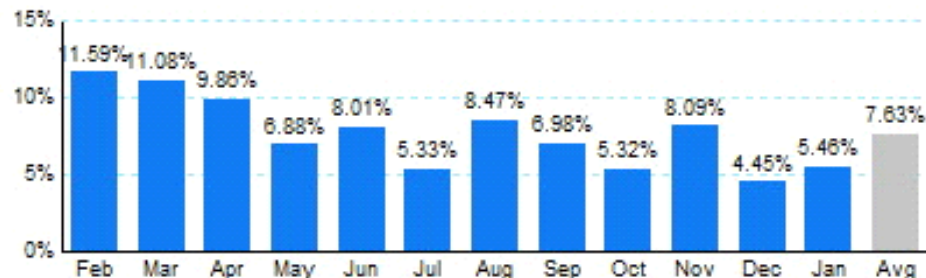


## 1.Total Business Jet Operations



Source: ETMSC  
Note: Operations refer to arrivals and departures.

## 2.Year Over Year Change in Business Jet Operations Feb 04 - Jan 05 vs. Feb 03 - Jan 04



Source: ETMSC

## 3.Monthly Trends

Month	Total			Domestic			International		
	2004-2005	2003-2004	Change	2004-2005	2003-2004	Change	2004-2005	2003-2004	Change
Feb	371,920	333,306	11.59%	328,032	294,050	11.56%	43,888	39,256	11.80%
Mar	402,796	362,612	11.08%	355,120	321,434	10.48%	47,676	41,178	15.78%
Apr	388,580	353,694	9.86%	343,536	315,938	8.74%	45,044	37,756	19.30%
May	385,990	361,150	6.88%	342,456	320,986	6.69%	43,534	40,164	8.39%
Jun	385,104	356,532	8.01%	339,638	313,782	8.24%	45,466	42,750	6.35%
Jul	381,650	362,322	5.33%	339,004	321,052	5.59%	42,646	41,270	3.33%
Aug	393,606	362,882	8.47%	353,060	324,548	8.79%	40,546	38,334	5.77%
Sep	384,772	359,678	6.98%	343,646	319,052	7.71%	41,126	40,626	1.23%
Oct	414,478	393,542	5.32%	373,668	352,266	6.08%	40,810	41,276	-1.13%
Nov	382,148	353,542	8.09%	340,628	313,750	8.57%	41,520	39,792	4.34%
Dec	359,024	343,714	4.45%	319,586	304,482	4.96%	39,438	39,232	0.53%
Jan	375,494	356,054	5.46%	332,958	313,636	6.16%	42,536	42,418	0.28%
Total	4,625,562	4,299,028	7.60%	4,111,332	3,814,976	7.77%	514,230	484,052	6.23%

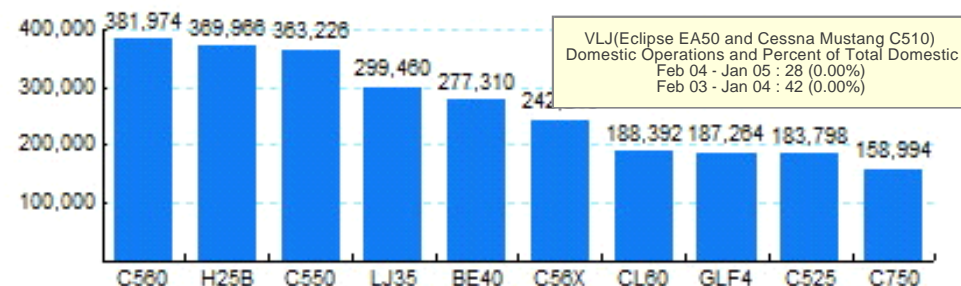
Source: ETMSC  
Note: International flights include US to Foreign, Foreign to US and all foreign operations.

## 4.Overall Trends (Calendar Year)

Year	Total		Domestic		International	
	Operations	Change	Operations	Change	Operations	Change
2005*	375,494		332,958		42,536	

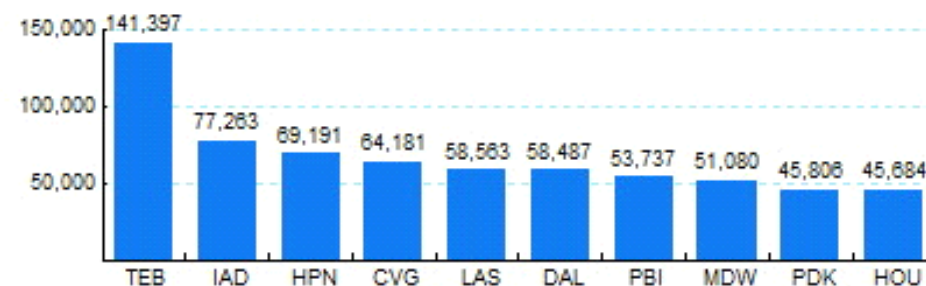
\* - Year to date  
Source: ETMSC  
Note: International flights include US to Foreign, Foreign to US and all foreign operations.

## 5.Top Ten Aircraft for Domestic Business Jet Operations Feb 04 - Jan 05



Source: ETMSC

## 6.Top Ten Airports for Domestic Business Jet Operations Feb 04 - Jan 05



Source: ETMSC