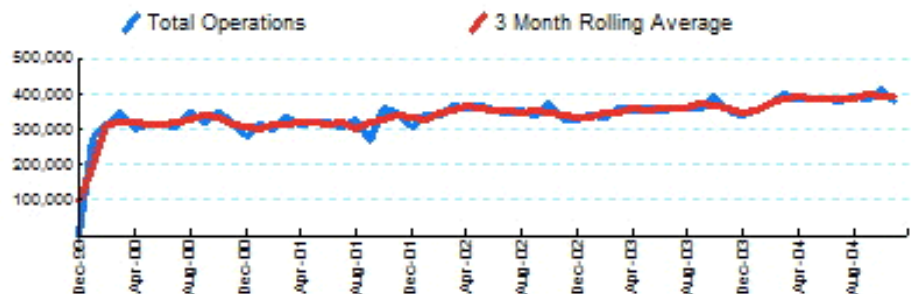


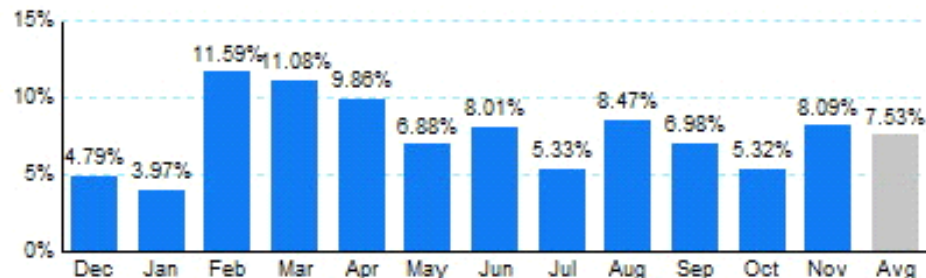


1.Total Business Jet Operations



Source: ETMSC
Note: Operations refer to arrivals and departures.

2.Year Over Year Change in Business Jet Operations Dec 03 - Nov 04 vs. Dec 02 - Nov 03



Source: ETMSC

3.Monthly Trends

Month	Total			Domestic			International		
	2003-2004	2002-2003	Change	2003-2004	2002-2003	Change	2003-2004	2002-2003	Change
Dec	343,714	327,988	4.79%	304,482	292,660	4.04%	39,232	35,328	11.05%
Jan	356,054	342,446	3.97%	313,636	302,884	3.55%	42,418	39,562	7.22%
Feb	371,920	333,306	11.59%	328,032	294,050	11.56%	43,888	39,256	11.80%
Mar	402,796	362,612	11.08%	355,120	321,434	10.48%	47,676	41,178	15.78%
Apr	388,580	353,694	9.86%	343,536	315,938	8.74%	45,044	37,756	19.30%
May	385,990	361,150	6.88%	342,456	320,986	6.69%	43,534	40,164	8.39%
Jun	385,104	356,532	8.01%	339,638	313,782	8.24%	45,466	42,750	6.35%
Jul	381,650	362,322	5.33%	339,004	321,052	5.59%	42,646	41,270	3.33%
Aug	393,606	362,882	8.47%	353,060	324,548	8.79%	40,546	38,334	5.77%
Sep	384,772	359,678	6.98%	343,646	319,052	7.71%	41,126	40,626	1.23%
Oct	414,478	393,542	5.32%	373,668	352,266	6.08%	40,810	41,276	-1.13%
Nov	382,148	353,542	8.09%	340,628	313,750	8.57%	41,520	39,792	4.34%
Total	4,590,812	4,269,694	7.52%	4,076,906	3,792,402	7.50%	513,906	477,292	7.67%

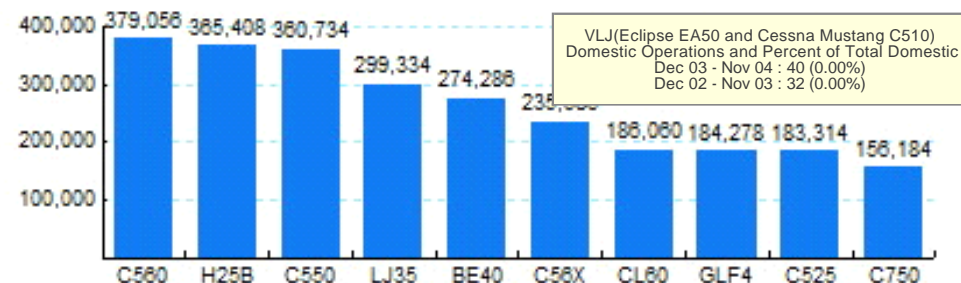
Source: ETMSC
Note: International flights include US to Foreign, Foreign to US and all foreign operations.

4.Overall Trends (Calendar Year)

Year	Total		Domestic		International	
	Operations	Change	Operations	Change	Operations	Change

* - Year to date
Source: ETMSC
Note: International flights include US to Foreign, Foreign to US and all foreign operations.

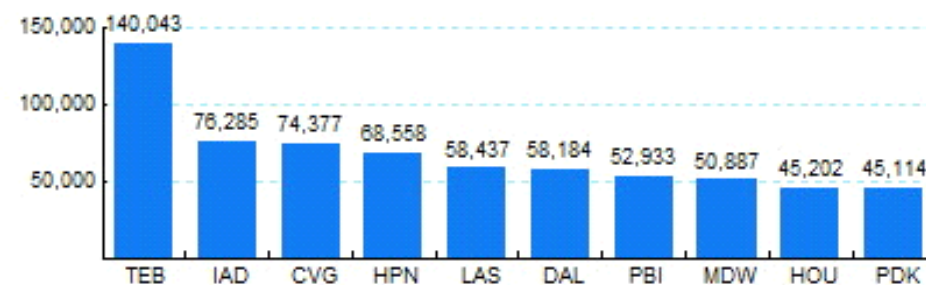
5.Top Ten Aircraft for Domestic Business Jet Operations Dec 03 - Nov 04



VLJ(Eclipse EA50 and Cessna Mustang C510)
Domestic Operations and Percent of Total Domestic
Dec 03 - Nov 04 : 40 (0.00%)
Dec 02 - Nov 03 : 32 (0.00%)

Source: ETMSC

6.Top Ten Airports for Domestic Business Jet Operations Dec 03 - Nov 04



Source: ETMSC