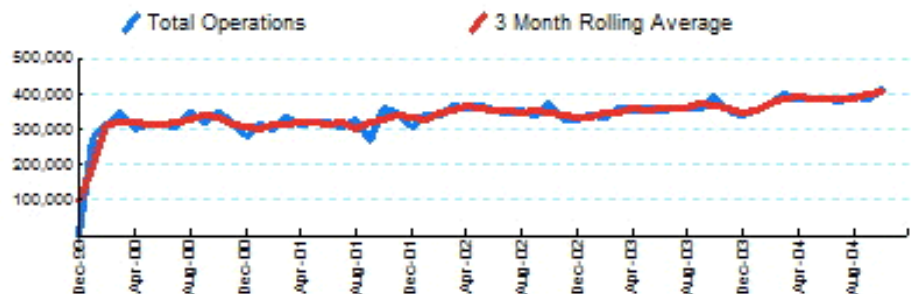


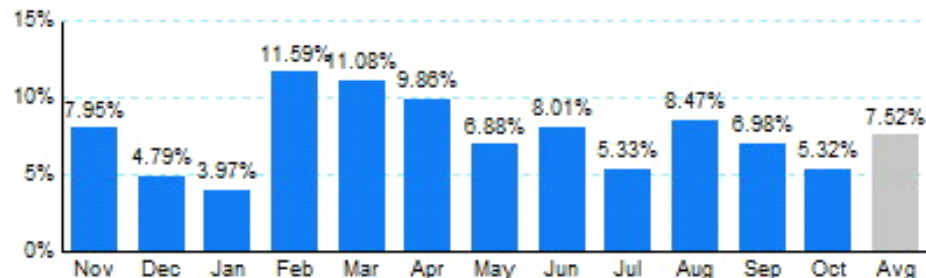


1.Total Business Jet Operations



Source: ETMSC
Note: Operations refer to arrivals and departures.

2.Year Over Year Change in Business Jet Operations Nov 03 - Oct 04 vs. Nov 02 - Oct 03



Source: ETMSC

3.Monthly Trends

Month	Total			Domestic			International		
	2003-2004	2002-2003	Change	2003-2004	2002-2003	Change	2003-2004	2002-2003	Change
Nov	353,542	327,518	7.95%	313,750	294,636	6.49%	39,792	32,882	21.01%
Dec	343,714	327,988	4.79%	304,482	292,660	4.04%	39,232	35,328	11.05%
Jan	356,054	342,446	3.97%	313,636	302,884	3.55%	42,418	39,562	7.22%
Feb	371,920	333,306	11.59%	328,032	294,050	11.56%	43,888	39,256	11.80%
Mar	402,796	362,612	11.08%	355,120	321,434	10.48%	47,676	41,178	15.78%
Apr	388,580	353,694	9.86%	343,536	315,938	8.74%	45,044	37,756	19.30%
May	385,990	361,150	6.88%	342,456	320,986	6.69%	43,534	40,164	8.39%
Jun	385,104	356,532	8.01%	339,638	313,782	8.24%	45,466	42,750	6.35%
Jul	381,650	362,322	5.33%	339,004	321,052	5.59%	42,646	41,270	3.33%
Aug	393,606	362,882	8.47%	353,060	324,548	8.79%	40,546	38,334	5.77%
Sep	384,772	359,678	6.98%	343,646	319,052	7.71%	41,126	40,626	1.23%
Oct	414,478	393,542	5.32%	373,668	352,266	6.08%	40,810	41,276	-1.13%
Total	4,562,206	4,243,670	7.51%	4,050,028	3,773,288	7.33%	512,178	470,382	8.89%

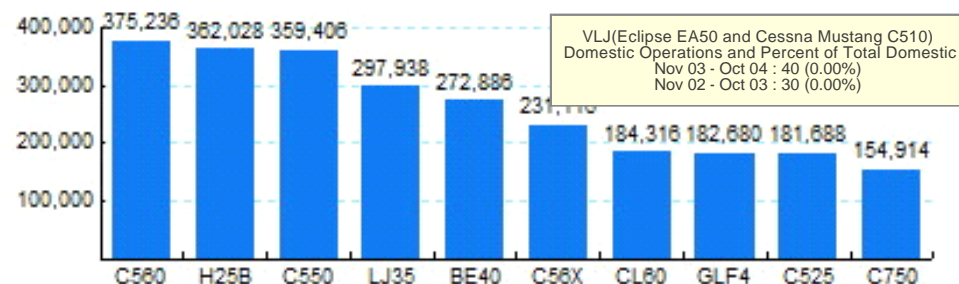
Source: ETMSC
Note: International flights include US to Foreign, Foreign to US and all foreign operations.

4.Overall Trends (Calendar Year)

Year	Total		Domestic		International	
	Operations	Change	Operations	Change	Operations	Change

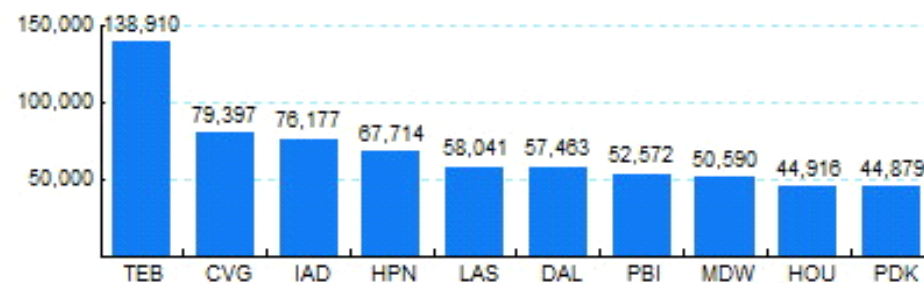
* - Year to date
Source: ETMSC
Note: International flights include US to Foreign, Foreign to US and all foreign operations.

5.Top Ten Aircraft for Domestic Business Jet Operations Nov 03 - Oct 04



Source: ETMSC

6.Top Ten Airports for Domestic Business Jet Operations Nov 03 - Oct 04



Source: ETMSC