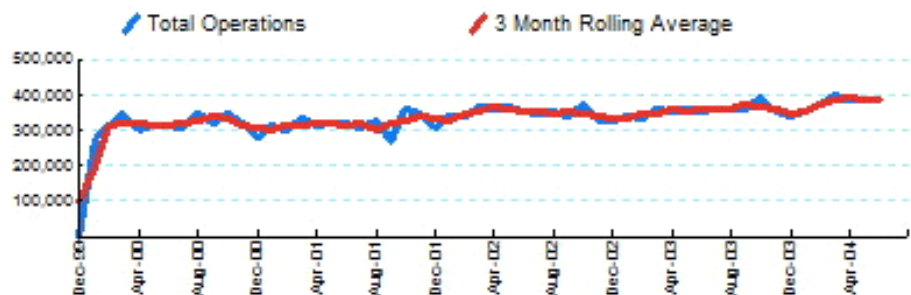


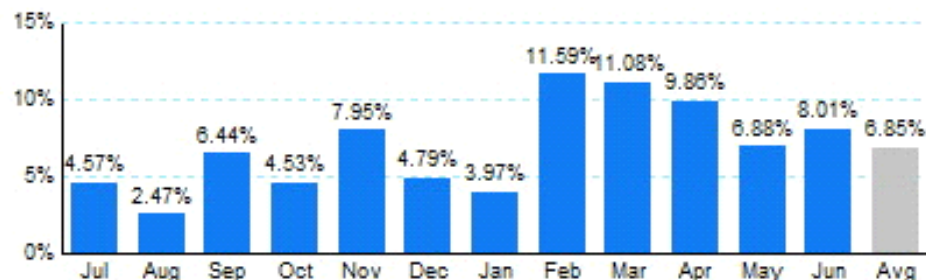


## 1.Total Business Jet Operations



Source: ETMSC  
Note: Operations refer to arrivals and departures.

## 2.Year Over Year Change in Business Jet Operations Jul 03 - Jun 04 vs. Jul 02 - Jun 03



Source: ETMSC

## 3.Monthly Trends

Month	Total			Domestic			International		
	2003-2004	2002-2003	Change	2003-2004	2002-2003	Change	2003-2004	2002-2003	Change
Jul	362,322	346,496	4.57%	321,052	310,120	3.53%	41,270	36,376	13.45%
Aug	362,882	354,120	2.47%	324,548	319,818	1.48%	38,334	34,302	11.75%
Sep	359,678	337,922	6.44%	319,052	303,254	5.21%	40,626	34,668	17.19%
Oct	393,542	376,502	4.53%	352,266	342,138	2.96%	41,276	34,364	20.11%
Nov	353,542	327,518	7.95%	313,750	294,636	6.49%	39,792	32,882	21.01%
Dec	343,714	327,988	4.79%	304,482	292,660	4.04%	39,232	35,328	11.05%
Jan	356,054	342,446	3.97%	313,636	302,884	3.55%	42,418	39,562	7.22%
Feb	371,920	333,306	11.59%	328,032	294,050	11.56%	43,888	39,256	11.80%
Mar	402,796	362,612	11.08%	355,120	321,434	10.48%	47,676	41,178	15.78%
Apr	388,580	353,694	9.86%	343,536	315,938	8.74%	45,044	37,756	19.30%
May	385,990	361,150	6.88%	342,456	320,986	6.69%	43,534	40,164	8.39%
Jun	385,104	356,532	8.01%	339,638	313,782	8.24%	45,466	42,750	6.35%
Total	4,466,124	4,180,286	6.84%	3,957,568	3,731,700	6.05%	508,556	448,586	13.37%

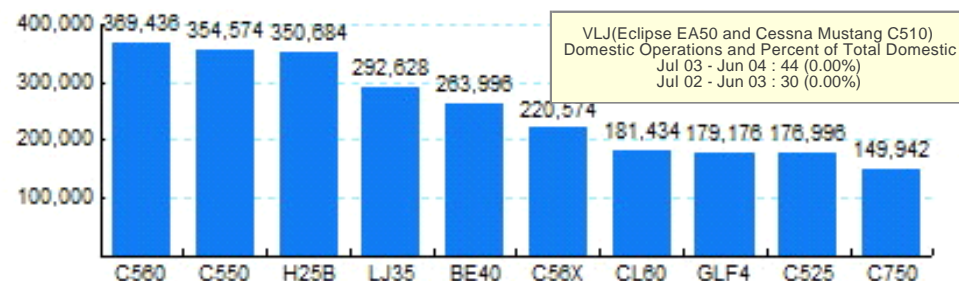
Source: ETMSC  
Note: International flights include US to Foreign, Foreign to US and all foreign operations.

## 4.Overall Trends (Calendar Year)

Year	Total		Domestic		International	
	Operations	Change	Operations	Change	Operations	Change

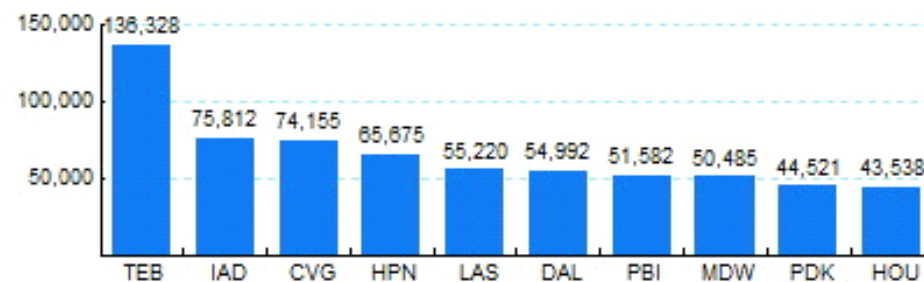
\* - Year to date  
Source: ETMSC  
Note: International flights include US to Foreign, Foreign to US and all foreign operations.

## 5.Top Ten Aircraft for Domestic Business Jet Operations Jul 03 - Jun 04



Source: ETMSC

## 6.Top Ten Airports for Domestic Business Jet Operations Jul 03 - Jun 04



Source: ETMSC