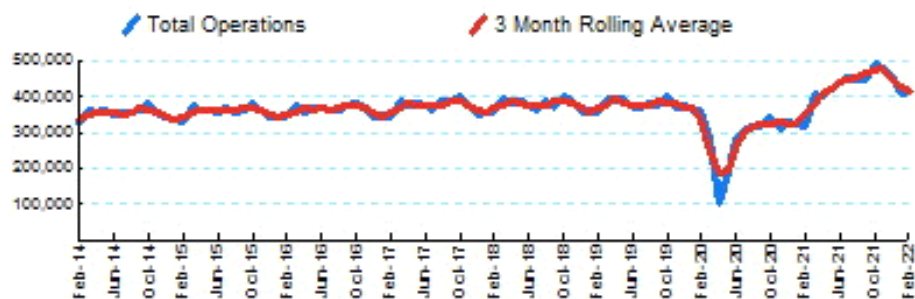


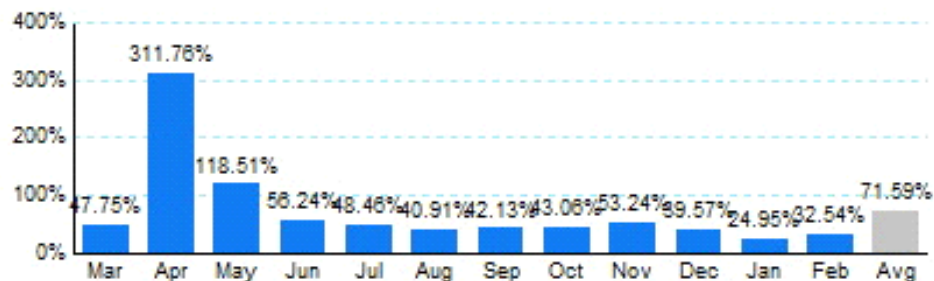


1.Total Business Jet Operations



Source: ETMSC
Note: Operations refer to arrivals and departures.

2.Year Over Year Change in Business Jet Operations Mar 21 - Feb 22 vs. Mar 20 - Feb 21



Source: ETMSC

3.Monthly Trends

Month	Total			Domestic			International		
	2021-2022	2020-2021	Change	2021-2022	2020-2021	Change	2021-2022	2020-2021	Change
Mar	411,182	278,300	47.75%	354,818	228,906	55.01%	56,364	49,394	14.11%
Apr	402,464	97,742	311.76%	345,988	85,032	306.89%	56,476	12,710	344.34%
May	421,562	192,926	118.51%	367,420	175,068	109.87%	54,142	17,858	203.18%
Jun	438,584	280,714	56.24%	384,866	252,836	52.22%	53,718	27,878	92.69%
Jul	456,088	307,218	48.46%	396,246	267,628	48.06%	59,842	39,590	51.15%
Aug	448,138	318,026	40.91%	391,248	278,522	40.47%	56,890	39,504	44.01%
Sep	449,154	316,022	42.13%	394,386	280,788	40.46%	54,768	35,234	55.44%
Oct	496,238	346,864	43.06%	434,386	308,138	40.97%	61,852	38,726	59.72%
Nov	477,342	311,496	53.24%	410,554	269,620	52.27%	66,788	41,876	59.49%
Dec	459,058	328,914	39.57%	390,574	278,054	40.47%	68,484	50,860	34.65%
Jan	407,152	325,856	24.95%	346,468	277,142	25.01%	60,684	48,714	24.57%
Feb	415,990	313,862	32.54%	353,248	273,442	29.19%	62,742	40,420	55.23%
Total	5,282,952	3,417,940	54.57%	4,570,202	2,975,176	53.61%	712,750	442,764	60.98%

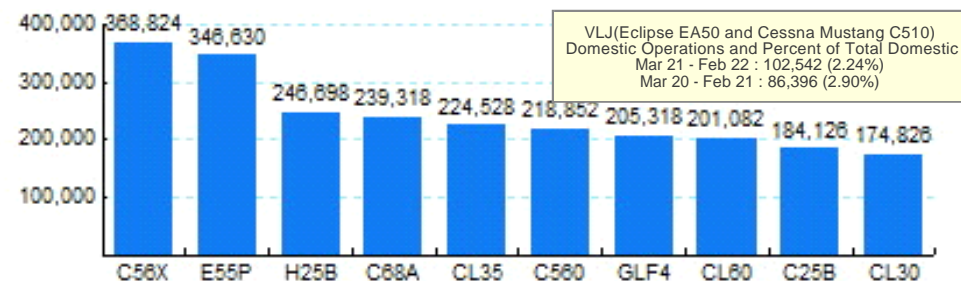
Source: ETMSC
Note: International flights include US to Foreign, Foreign to US and all foreign operations.

4.Overall Trends (Calendar Year)

Year	Total		Domestic		International	
	Operations	Change	Operations	Change	Operations	Change
2012	3,982,236		3,315,438		666,798	
2013	4,072,848	2.28%	3,394,942	2.40%	677,906	1.67%
2014	4,235,910	4.00%	3,527,038	3.89%	708,872	4.57%
2015	4,291,174	1.30%	3,605,060	2.21%	686,114	-3.21%
2016	4,349,740	1.36%	3,667,338	1.73%	682,402	-0.54%
2017	4,483,614	3.08%	3,793,700	3.45%	689,914	1.10%
2018	4,520,968	0.83%	3,824,528	0.81%	696,440	0.95%
2019	4,533,920	0.29%	3,836,578	0.32%	697,342	0.13%
2020	3,501,192	-22.78%	3,033,148	-20.94%	468,044	-32.88%
2021	5,099,528	45.65%	4,421,070	45.76%	678,458	44.96%
2022*	823,142		699,716		123,426	

* - Year to date
Source: ETMSC
Note: International flights include US to Foreign, Foreign to US and all foreign operations.

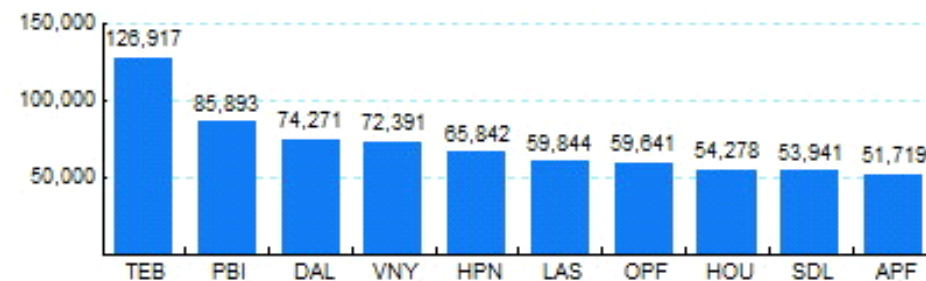
5.Top Ten Aircraft for Domestic Business Jet Operations Mar 21 - Feb 22



VLJ(Eclipse EA50 and Cessna Mustang C510)
Domestic Operations and Percent of Total Domestic
Mar 21 - Feb 22 : 102,542 (2.24%)
Mar 20 - Feb 21 : 86,396 (2.90%)

Source: ETMSC

6.Top Ten Airports for Domestic Business Jet Operations Mar 21 - Feb 22



Source: ETMSC